

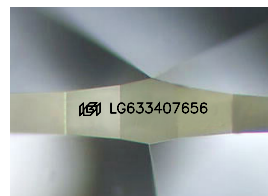
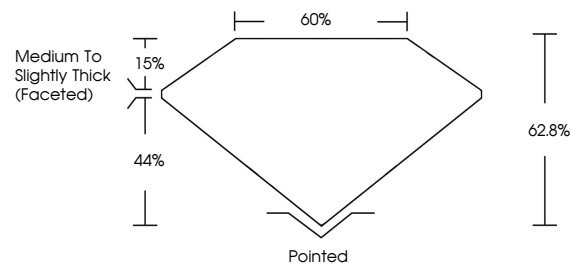


ELECTRONIC COPY

LABORATORY GROWN DIAMOND REPORT

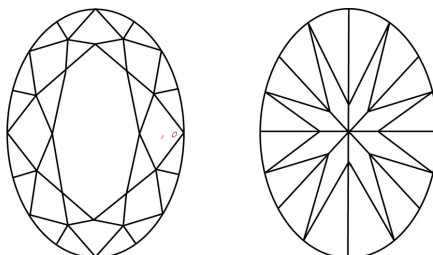
LG633407656
Report verification at igi.org

PROPORTIONS



Sample Image Used

CLARITY CHARACTERISTICS



KEY TO SYMBOLS

Red symbols indicate internal characteristics.
Green symbols indicate external characteristics.

COLOR

D E F G H I J Faint Very Light Light

CLARITY

IF	VVS ¹⁻²	VS ¹⁻²	SI ¹⁻²	I ¹⁻³
Internally Flawless	Very Very Slightly Included	Very Slightly Included	Slightly Included	Included



© IGI 2020, International Gemological Institute

FD - 10 20

DIAMOND REPORT



May 14, 2024

IGI Report Number **LG633407656**

Description	LABORATORY GROWN DIAMOND
-------------	--------------------------

Shape and Cutting Style **OVAL BRILLIANT**

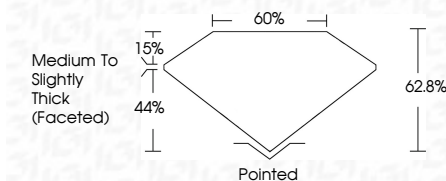
Measurements 10.33 X 7.28 X 4.57 MM

GRADING RESULTS

Carat Weight **2.17 CARATS**

Color Grade H

Clarity Grade VS 1



ADDITIONAL GRADING INFORMATION

Polish **EXCELLENT**Symmetry **EXCELLENT**Fluorescence **NONE**Inscription(s) LG633407656

Comments: This Laboratory Grown Diamond was created by Chemical Vapor Deposition (CVD) growth process and may include post-growth treatment.
Type IIa



May 14, 2024	GI Report No LG533407655	217 CARATS
GI VAL BRILLIANT	10.33 X 7.28 X 4.67 MM	
Carat Weight	Color Grade	H
Clarity Grade	Depth	VS 1
Table	Grade	62.8%
Grade		60%
		Medium to Slightly Thick Faceted
Culet		Polished
Polish		EXCELLENT
Symmetry		EXCELLENT
Fluorescence		NONE
Measurements		see LG533407655

Comments:
This Laboratory Grown Diamond was created by Chemical Vapor Deposition (CVD) growth process and may include post-growth treatment.