

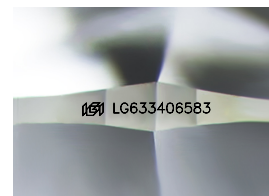
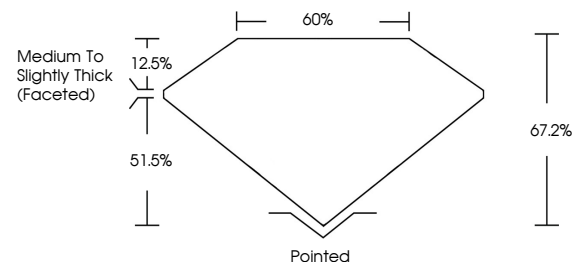


ELECTRONIC COPY

LABORATORY GROWN DIAMOND REPORT

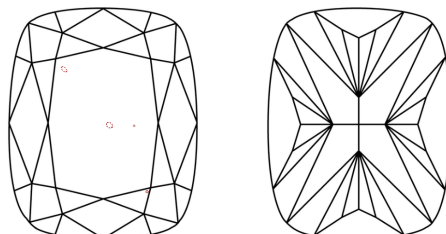
LG633406583
Report verification at lgi.org

PROPORTIONS



Sample Image Used

CLARITY CHARACTERISTICS



KEY TO SYMBOLS

Red symbols indicate internal characteristics.
Green symbols indicate external characteristics.

COLOR

D E F G H I J Faint Very Light Light

CLARITY

IF	VVS ^{1,2}	VS ^{1,2}	SI ^{1,2}	I ^{1,3}
Internally Flawless	Very Very Slightly Included	Very Slightly Included	Slightly Included	Included



© IGI 2020, International Gemological Institute

FD - 10 20

www.igi.org

DIAMOND REPORT



May 4, 2024

IGI Report Number LG633406583

Description **LABORATORY GROWN DIAMOND**Shape and Cutting Style **CUSHION BRILLIANT**

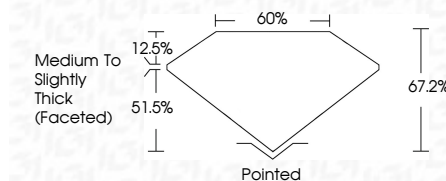
Measurements 9.25 X 6.58 X 4.42 MM

GRADING RESULTS

Carat Weight **2.07 CARATS**

Color Grade G

Clarity Grade VS 1



ADDITIONAL GRADING INFORMATION

Polish **EXCELLENT**Symmetry **EXCELLENT**Fluorescence **NONE**Inscription(s)  LG633406583

Comments: This Laboratory Grown Diamond was created by Chemical Vapor Deposition (CVD) growth process and may include post-growth treatment.
Type IIa



May 4, 2024	2.07 CARATS
GI Report No. LG334045583	VSI
CUSHION BRILLIANT	67.2%
25.25 X 15.58 X 4.42 MM	60%
Color Grade	Medium to Slightly Thick (Faceted)
Carat Weight	Polished
Clarity Grade	EXCELLENT
Depth	EXCELLENT
Table	NONE
Gable	1691 LG334045583
Fluorescence	
Inscriptions(s)	
Quel	
Polish	
Symmetry	
Comments:	
The Laboratory Grown Diamond was produced using a High Pressure High Temperature (HPHT) growth process and may include post-growth treatment.	
Type IIA	