



ELECTRONIC COPY

LABORATORY GROWN DIAMOND REPORT

May 8, 2024	
IGI Report Number	LG633405820
Description	LABORATORY GROWN DIAMOND
Shape and Cutting Style	PEAR BRILLIANT
Measurements	11.24 X 6.75 X 4.12 MM

GRADING RESULTS

Carat Weight	1.82 CARAT
Color Grade	D
Clarity Grade	VVS 2

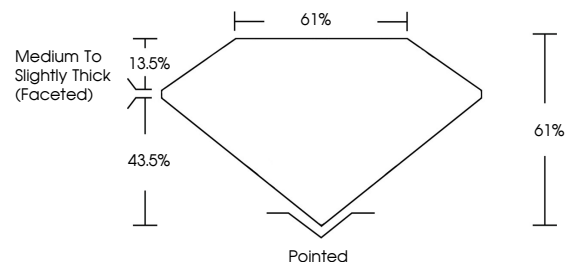
ADDITIONAL GRADING INFORMATION

Polish	EXCELLENT
Symmetry	EXCELLENT
Fluorescence	NONE
Inscription(s)	15 LG633405820

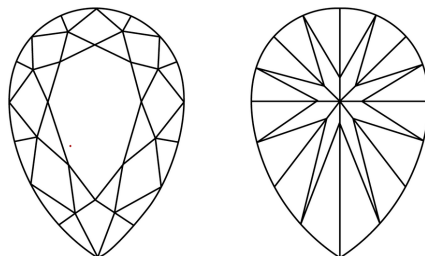
Comments: This Laboratory Grown Diamond was created by Chemical Vapor Deposition (CVD) growth process and may include post-growth treatment.
Type IIa

LG633405820
Report verification at lgi.org

PROPORTIONS

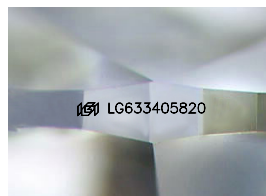


CLARITY CHARACTERISTICS



KEY TO SYMBOLS

Red symbols indicate internal characteristics.
Green symbols indicate external characteristics.



Sample Image Used

COLOR

D E F G H I J Faint Very Light Light

CLARITY

IF	WVS ¹⁻²	VS ¹⁻²	SI ¹⁻²	I ¹⁻³
Internally Flawless	Very Very Slightly Included	Very Slightly Included	Slightly Included	Included



© IGI 2020, International Gemological Institute

FD - 10 20

www.igi.org

DIAMOND REPORT



May 8, 2024

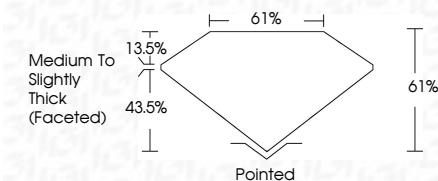
IGI Report Number **LG633405820**Description **LABORATORY GROWN DIAMOND**Shape and Cutting Style **PEAR BRILLIANT**

Measurements 11.24 X 6.75 X 4.12 MM

GRADING RESULTS

Carat Weight 1.82 CARAT

Color Grade D

Clarity Grade VVS 2

ADDITIONAL GRADING INFORMATION

Polish **EXCELLENCE**Symmetry **EXCELLENCE**

Fluorescence NONI

Inscription(s) LG63340582

Comments: This Laboratory Grown Diamond was created by Chemical Vapor Deposition (CVD) growth process and may include post-growth treatment.
Type IIa



IG

May 8, 2024	1.82 CARAT
Growth Report No. LG633405920	D
PEAR BRILLIANT	VVS 2
1.124 X 6.75 X 4.12 MM	61%
Coral Weight	61%
Color Grade	Medium to Slightly Thick (faceted)
Clarity Grade	Patched
Depth	EXCELLENT
Table	EXCELLENT
Girdle	NONE
Facets	#68 LG633405920
Symmetry	
Fluorescence	
Description(s)	
Comments:	
	grown Diamond was created by Chemical Vapor Deposition (CVD) growth process and may include post-growth treatment.
	Type IIA