

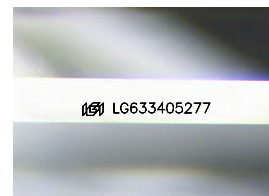
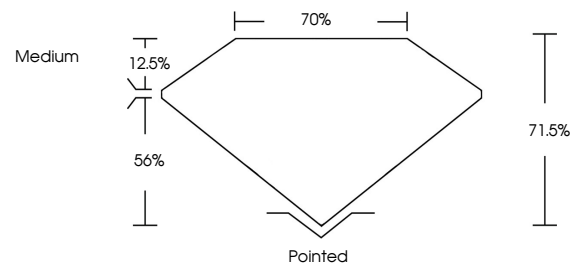


**ELECTRONIC COPY**

## LABORATORY GROWN DIAMOND REPORT

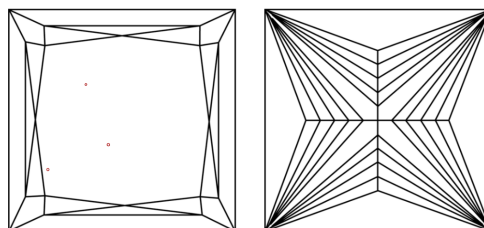
LG633405277  
Report verification at [igi.org](https://igi.org)

## PROPORTIONS



Sample Image Used

## CLARITY CHARACTERISTICS



## KEY TO SYMBOLS

Red symbols indicate internal characteristics.  
Green symbols indicate external characteristics.

## COLOR

D E F G H I J Faint Very Light Light

## CLARITY

| IF                  | VVS <sup>1,2</sup>          | VS <sup>1,2</sup>      | SI <sup>1,2</sup> | I <sup>1,3</sup> |
|---------------------|-----------------------------|------------------------|-------------------|------------------|
| Internally Flawless | Very Very Slightly Included | Very Slightly Included | Slightly Included | Included         |



© IGI 2020, International Gemological Institute

FD - 10 20

**www.igi.org**

## DIAMOND REPORT



May 8, 2024

IGI Report Number **LG633405277**Description **LABORATORY GROWN DIAMOND**Shape and Cutting Style **PRINCESS CUT**

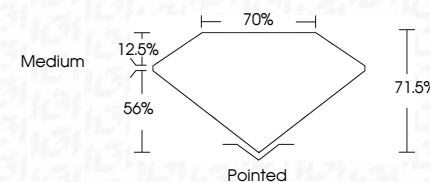
Measurements 5.62 X 5.57 X 3.98 MM

## GRADING RESULTS

Carat Weight 1.08 CARAT

Color Grade D

Clarity Grade VS 1



### ADDITIONAL GRADING INFORMATION

Polish **EXCELLENT**Symmetry **EXCELLENT**Fluorescence **NONE**Inscription(s)  LG633405277

Comments: This Laboratory Grown Diamond was created by Chemical Vapor Deposition (CVD) growth process and may include post-growth treatment.  
Type IIa



May 8, 2024  
GI Report No LG633405277  
PRINCESS CUT

|                       |            |
|-----------------------|------------|
| 6.62 X 5.57 X 3.98 MM | 1.08 CARAT |
| Carat Weight          | D          |
| Color Grade           | VS 1       |
| Clarity Grade         | 71.6%      |
| Depth                 | 70%        |
| Table                 | Medium     |
| Girdle                | Pointed    |
| Culet                 | EXCELLENT  |
| Polish                | EXCELLENT  |
| Symmetry              | NONE       |
| Fluorescence          |            |

**Comments:**  
This Laboratory Grown Diamond was created by Chemical Vapor Deposition (CVD) growth process and may include post-growth treatment.