

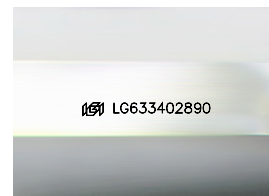
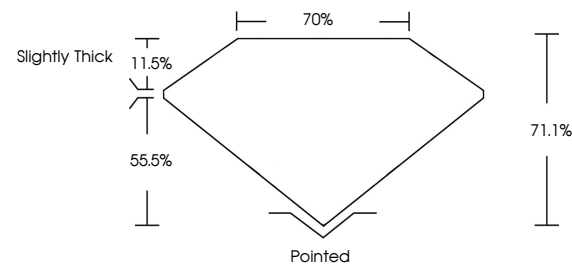


ELECTRONIC COPY

LABORATORY GROWN DIAMOND REPORT

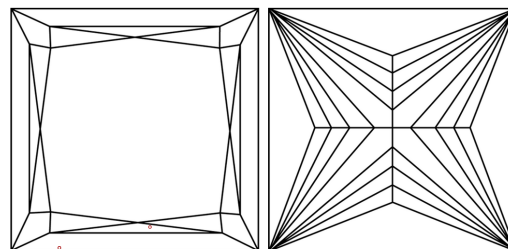
LG633402890
Report verification at igi.org

PROPORTIONS



Sample Image Used

CLARITY CHARACTERISTICS



KEY TO SYMBOLS

Red symbols indicate internal characteristics.
Green symbols indicate external characteristics.

COLOR

D E F G H I J Faint Very Light Light

CLARITY

IF	VVS ¹⁻²	VS ¹⁻²	SI ¹⁻²	I ¹⁻³
Internally Flawless	Very Very Slightly Included	Very Slightly Included	Slightly Included	Included



© IGI 2020, International Gemological Institute

FD - 10 20

www.igi.org

DIAMOND REPORT



May 12, 2024

IGI Report Number **LG633402890**

Description	LABORATORY GROWN DIAMOND
-------------	--------------------------

Shape and Cutting Style **PRINCESS CUT**

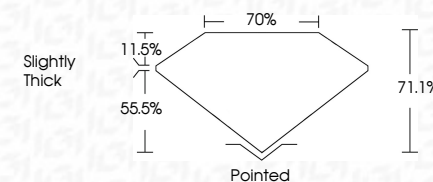
Measurements **7.32 X 7.19 X 5.11 MM**

GRADING RESULTS

Carat Weight **2.37 CARATS**

Color Grade **G**

Clarity Grade VS 1



ADDITIONAL GRADING INFORMATION

Polish **EXCELLENT**Symmetry **EXCELLENT**Fluorescence **NONE**Inscription(s) LG633402890

Comments: This Laboratory Grown Diamond was created by Chemical Vapor Deposition (CVD) growth process and may include post-growth treatment.
Type IIa



May 12, 2024
 IGI Report No LG63402890
 PRINCESS CLIT

3.92 X 7.19 X 6.11 MM	Carat Weight	VS 1	Pointed
	Color Grade	71.1%	EXCELLENT
	Clarity Grade	70%	EXCELLENT
	Depth	Slightly Thick	NONE
	Table		44.11 (45.53-47.92)°
	Girdle		
	Culet		
	Polish		
	Symmetry		
	Fluorescence		
	Comments(s)		

Comments:
This Laboratory Grown Diamond was created by Chemical Vapor Deposition (CVD) growth process and may include post-growth treatment.