

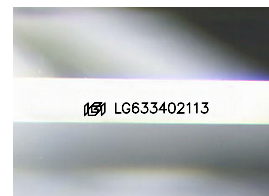
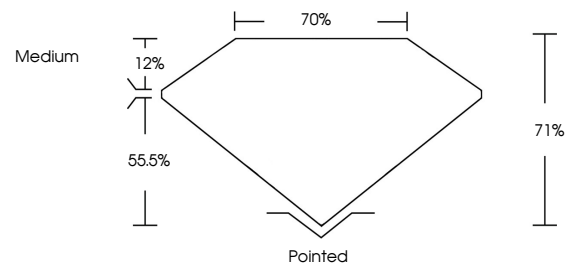


**ELECTRONIC COPY**

## LABORATORY GROWN DIAMOND REPORT

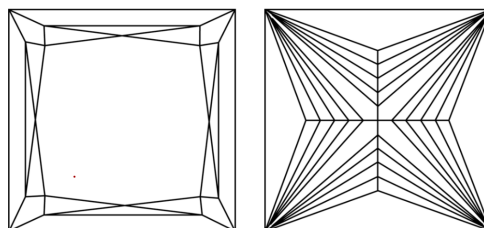
LG633402113  
Report verification at [igi.org](https://igi.org)

## PROPORTIONS



Sample Image Used

## CLARITY CHARACTERISTICS



## KEY TO SYMBOLS

Red symbols indicate internal characteristics.  
Green symbols indicate external characteristics.

## COLOR



## CLARITY

IF	VVS <sup>1-2</sup>	VS <sup>1-2</sup>	SI <sup>1-2</sup>	I <sup>1-3</sup>
Internally Flawless	Very Very Slightly Included	Very Slightly Included	Slightly Included	Included



© IGI 2020, International Gemological Institute

FD - 10 20

**www.igi.org**

## DIAMOND REPORT



May 4, 2024

IGI Report Number **LG633402113**

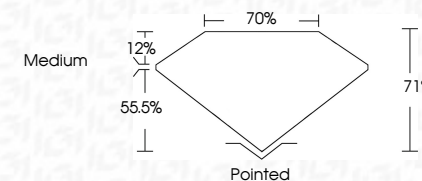
Description **LABORATORY GROWN DIAMOND**Shape and Cutting Style **PRINCESS CUT**

Measurements 7.92 X 7.87 X 5.59 MM

## GRADING RESULTS

Carat Weight **3.08 CARATS**

Color Grade F

Clarity Grade VVS 2

### ADDITIONAL GRADING INFORMATION

Polish **EXCELLEN**Symmetry **EXCELLEN**

Fluorescence NONI

Inscription(s)  LG63340211

Comments: This Laboratory Grown Diamond was created by Chemical Vapor Deposition (CVD) growth process and may include post-growth treatment.  
Type IIa



May 4, 2024  
GI Report No LG633402113  
PRINCESS CUT

1.92 X 7.87 X 5.59 MM	3.08 CARATS
Carat Weight	F
Color Grade	VVS 2
Clarity Grade	71%
Depth	70%
Table	Medium
Girdle	Pointed
Quiet	EXCELLENT
Polish	EXCELLENT
Symmetry	NONE
Fluorescence	
Reference(s)	gem/124599/02113

**Comments:**  
This Laboratory Grown Diamond was created by Chemical Vapor Deposition (CVD) growth process and may include post-growth treatment.