



ELECTRONIC COPY

LG632497611

Report verification at igi.org

LABORATORY GROWN DIAMOND REPORT

May 16, 2024
IGI Report Number **LG632497611**
Description **LABORATORY GROWN DIAMOND**
Shape and Cutting Style **ROUND BRILLIANT**
Measurements **7.42 - 7.45 X 4.53 MM**

GRADING RESULTS

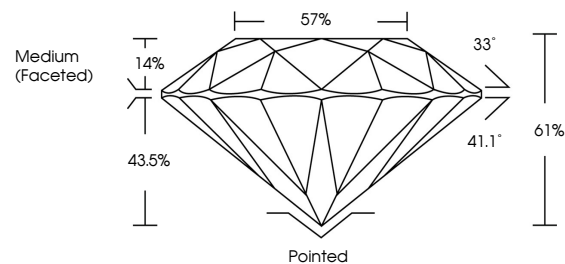
Carat Weight **1.52 CARAT**
Color Grade **FANCY BLUE**
Clarity Grade **VS 2**
Cut Grade **IDEAL**

ADDITIONAL GRADING INFORMATION

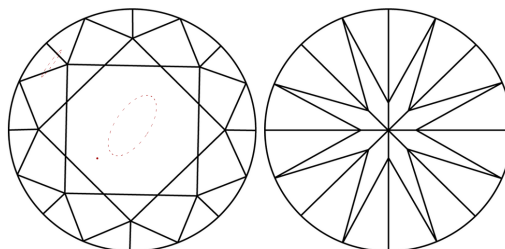
Polish **EXCELLENT**
Symmetry **EXCELLENT**
Fluorescence **NONE**
Inscription(s) **LG632497611**

Comments: This Laboratory Grown Diamond was created by Chemical Vapor Deposition (CVD) growth process.
Indications of post-growth treatment.

PROPORTIONS



CLARITY CHARACTERISTICS



KEY TO SYMBOLS

Red symbols indicate internal characteristics.
Green symbols indicate external characteristics.

GRADING SCALES

CLARITY

IF	VVS ¹⁻²	VS ¹⁻²	SI ¹⁻²	I ¹⁻³
Internally Flawless	Very Very Slightly Included	Very Slightly Included	Slightly Included	Included

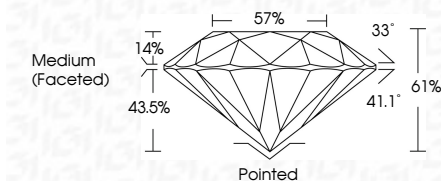
COLOR

D	E	F	G	H	I	J	Faint	Very Light	Light
Light Tint	Fancy Light	Fancy	Fancy Intense	Fancy Vivid					

May 16, 2024
IGI Report Number **LG632497611**
Description **LABORATORY GROWN DIAMOND**
Shape and Cutting Style **ROUND BRILLIANT**
Measurements **7.42 - 7.45 X 4.53 MM**

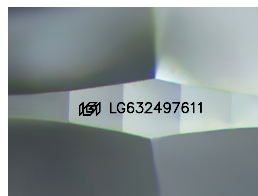
GRADING RESULTS

Carat Weight **1.52 CARAT**
Color Grade **FANCY BLUE**
Clarity Grade **VS 2**
Cut Grade **IDEAL**



ADDITIONAL GRADING INFORMATION

Polish **EXCELLENT**
Symmetry **EXCELLENT**
Fluorescence **NONE**
Inscription(s) **LG632497611**
Comments: This Laboratory Grown Diamond was created by Chemical Vapor Deposition (CVD) growth process.
Indications of post-growth treatment.



Sample Image Used



IGI

May 16, 2024	1.52 CARAT	Pointed
IGI Report No LG632497611	FANCY BLUE	EXCELLENT
ROUND BRILLIANT	VS 2	EXCELLENT
7.42 - 7.45 X 4.53 MM	IDEAL	NONE
Carat Weight	Depth 61%	Inscriptions(s) LG632497611
Color Grade	Girdle 57%	
Clarity Grade	Medium (Faceted)	
Cut Grade		
Polish		
Symmetry		
Fluorescence		
Inscriptions(s)		

Comments: This Laboratory Grown Diamond was created by Chemical Vapor Deposition (CVD) growth process.
Indications of post-growth treatment.