



**ELECTRONIC COPY**

LG632491872  
Report verification at igi.org

**LABORATORY GROWN DIAMOND REPORT**

May 2, 2024  
IGI Report Number **LG632491872**  
Description **LABORATORY GROWN DIAMOND**  
Shape and Cutting Style **PEAR MODIFIED BRILLIANT**  
Measurements **9.94 X 6.78 X 4.32 MM**

**GRADING RESULTS**

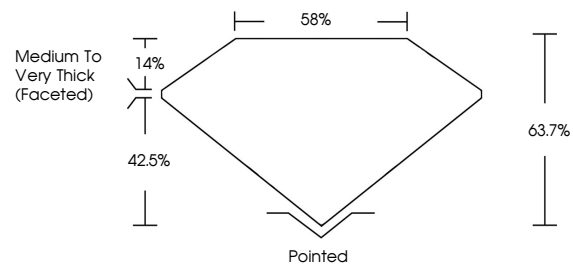
Carat Weight **2.13 CARATS**  
Color Grade **FANCY VIVID YELLOW**  
Clarity Grade **VS 2**

**ADDITIONAL GRADING INFORMATION**

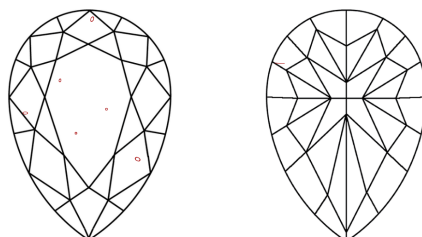
Polish **EXCELLENT**  
Symmetry **EXCELLENT**  
Fluorescence **NONE**  
Inscription(s) **IGI LG632491872**

Comments: This Laboratory Grown Diamond was created by Chemical Vapor Deposition (CVD) growth process and may include post-growth treatment.

**PROPORTIONS**

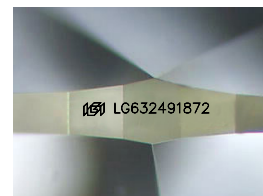


**CLARITY CHARACTERISTICS**



**KEY TO SYMBOLS**

Red symbols indicate internal characteristics.  
Green symbols indicate external characteristics.



Sample Image Used

**COLOR**

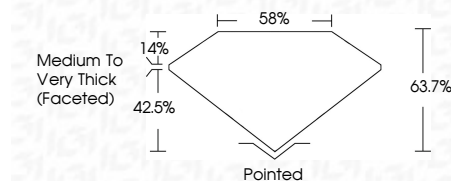
D E F G H I J Faint Very Light Light

**CLARITY**

IF	VS <sup>1-2</sup>	VS <sup>1-2</sup>	SI <sup>1-2</sup>	I <sup>1-3</sup>
Internally Flawless	Very Very Slightly Included	Very Slightly Included	Slightly Included	Included



May 2, 2024  
IGI Report Number **LG632491872**  
Description **LABORATORY GROWN DIAMOND**  
Shape and Cutting Style **PEAR MODIFIED BRILLIANT**  
Measurements **9.94 X 6.78 X 4.32 MM**  
**GRADING RESULTS**  
Carat Weight **2.13 CARATS**  
Color Grade **FANCY VIVID YELLOW**  
Clarity Grade **VS 2**



**ADDITIONAL GRADING INFORMATION**

Polish **EXCELLENT**  
Symmetry **EXCELLENT**  
Fluorescence **NONE**  
Inscription(s) **IGI LG632491872**  
Comments: This Laboratory Grown Diamond was created by Chemical Vapor Deposition (CVD) growth process and may include post-growth treatment.



**IGI**

May 2, 2024  
IGI Report No. LG632491872  
**PEAR MODIFIED BRILLIANT**  
9.94 X 6.78 X 4.32 MM  
2.13 CARATS  
FANCY VIVID YELLOW  
VS 2  
63.7%  
85%  
Medium to Very Thick (Faceted)  
Pointed  
EXCELLENT  
EXCELLENT  
NONE  
IGI LG632491872

Comments: This Laboratory Grown Diamond was created by Chemical Vapor Deposition (CVD) growth process and may include post-growth treatment.