



ELECTRONIC COPY

LG632491755
Report verification at igi.org



May 2, 2024
IGI Report Number **LG632491755**
Description **LABORATORY GROWN DIAMOND**
Shape and Cutting Style **CUSHION MODIFIED BRILLIANT**
Measurements **14.08 X 11.75 X 8.44 MM**
GRADING RESULTS
Carat Weight **14.04 CARATS**
Color Grade **FANCY VIVID YELLOW**
Clarity Grade **VS 2**

LABORATORY GROWN DIAMOND REPORT

May 2, 2024
IGI Report Number **LG632491755**
Description **LABORATORY GROWN DIAMOND**
Shape and Cutting Style **CUSHION MODIFIED BRILLIANT**
Measurements **14.08 X 11.75 X 8.44 MM**

GRADING RESULTS

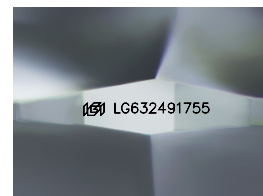
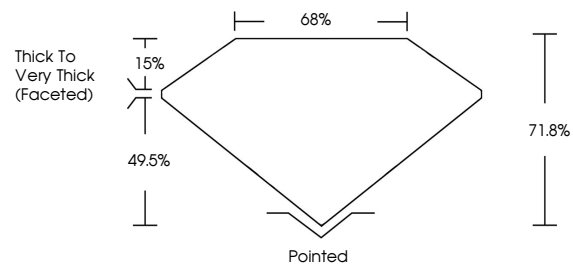
Carat Weight **14.04 CARATS**
Color Grade **FANCY VIVID YELLOW**
Clarity Grade **VS 2**

ADDITIONAL GRADING INFORMATION

Polish **EXCELLENT**
Symmetry **EXCELLENT**
Fluorescence **NONE**
Inscription(s) **IGI LG632491755**

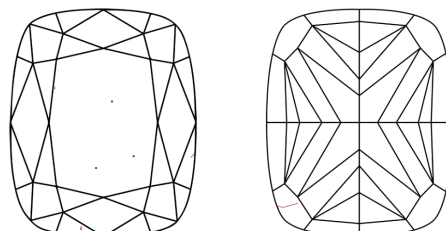
Comments: This Laboratory Grown Diamond was created by Chemical Vapor Deposition (CVD) growth process and may include post-growth treatment.

PROPORTIONS



Sample Image Used

CLARITY CHARACTERISTICS



KEY TO SYMBOLS

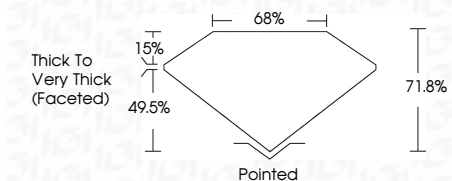
Red symbols indicate internal characteristics.
Green symbols indicate external characteristics.

COLOR

D E F G H I J Faint Very Light Light

CLARITY

IF	VS ¹⁻²	VS ¹⁻²	SI ¹⁻²	I ¹⁻³
Internally Flawless	Very Very Slightly Included	Very Slightly Included	Slightly Included	Included



ADDITIONAL GRADING INFORMATION

Polish **EXCELLENT**
Symmetry **EXCELLENT**
Fluorescence **NONE**
Inscription(s) **IGI LG632491755**
Comments: This Laboratory Grown Diamond was created by Chemical Vapor Deposition (CVD) growth process and may include post-growth treatment.



IGI

May 2, 2024
IGI Report No LG632491755
CUSHION MODIFIED BRILLIANT
14.04 CARATS
Carat Weight
Color Grade **FANCY VIVID YELLOW**
Clarity Grade **VS 2**
Depth **71.8%**
Table **65%**
Girdle
Thick to Very Thick (Faceted)
Culet Pointed
Polish **EXCELLENT**
Symmetry **EXCELLENT**
Fluorescence **NONE**
Inscription(s) **IGI LG632491755**
Comments: This Laboratory Grown Diamond was created by Chemical Vapor Deposition (CVD) growth process and may include post-growth treatment.