

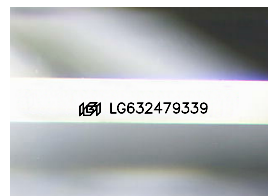
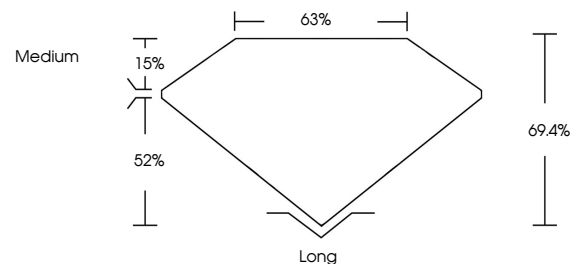


**ELECTRONIC COPY**

## LABORATORY GROWN DIAMOND REPORT

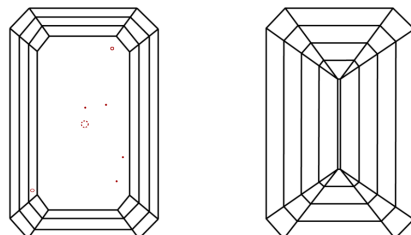
LG632479339  
Report verification at [lgi.org](https://lgi.org)

## PROPORTIONS



Sample Image Used

## CLARITY CHARACTERISTICS



### KEY TO SYMBOLS

Red symbols indicate internal characteristics.  
Green symbols indicate external characteristics.

## COLOR

D E F G H I J Faint Very Light Light

## CLARITY

IF	VVS <sup>1-2</sup>	VS <sup>1-2</sup>	SI <sup>1-2</sup>	I <sup>1-3</sup>
Internally Flawless	Very Very Slightly Included	Very Slightly Included	Slightly Included	Included



© IGI 2020, International Gemological Institute

FD - 10 20

## DIAMOND REPORT



April 29, 2024

IGI Report Number **LG632479339**

Description	LABORATORY GROWN DIAMOND
-------------	--------------------------

Shape and Cutting Style **EMERALD CUT**

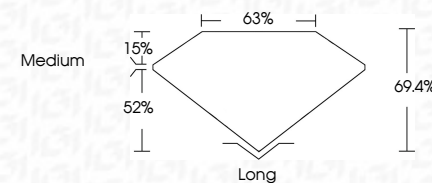
Measurements 9.12 X 6.60 X 4.58 MM

## GRADING RESULTS

Carat Weight **2.64 CARATS**

Color Grade F

Clarity Grade VS 1



### ADDITIONAL GRADING INFORMATION

Polish **EXCELLENT**Symmetry **EXCELLENT**Fluorescence **NONE**Inscription(s)  LG632479339

Comments: This Laboratory Grown Diamond was created by Chemical Vapor Deposition (CVD) growth process and may include post-growth treatment.  
Type IIa



April 29, 2024  
GI Report No LG632479339

GIA Report No. IGA532479339 EMERALD CUT 12.12 X 6.60 X 4.58 MM Color Weight Color Grade Clarity Grade Depth Table Girdle Culet Polish Symmetry Fluorescence	2.64 CARATS F VS 1 66.4% 65% Medium Long EXCELLENT EXCELLENT NONE None (daylight)
---	---

**Comments:**  
This Laboratory Grown Diamond was created by Chemical Vapor Deposition (CVD) growth process and may include post-growth treatment.