



**ELECTRONIC COPY**

LG632476973  
Report verification at [igi.org](http://igi.org)

**LABORATORY GROWN DIAMOND REPORT**

April 30, 2024  
IGI Report Number **LG632476973**  
Description **LABORATORY GROWN DIAMOND**  
Shape and Cutting Style **EMERALD CUT**  
Measurements **11.90 X 7.63 X 5.73 MM**

**GRADING RESULTS**

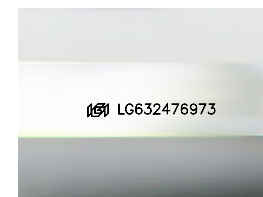
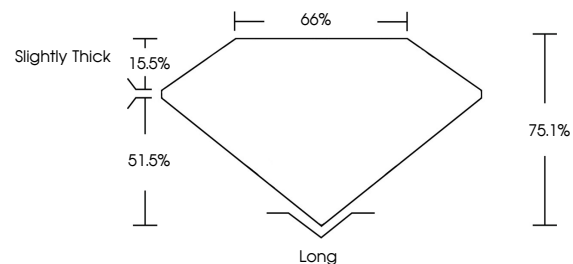
Carat Weight **5.55 CARATS**  
Color Grade **FANCY YELLOW**  
Clarity Grade **VVS 2**

**ADDITIONAL GRADING INFORMATION**

Polish **EXCELLENT**  
Symmetry **EXCELLENT**  
Fluorescence **NONE**  
Inscription(s)  **LG632476973**

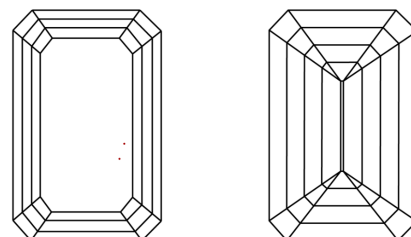
Comments: This Laboratory Grown Diamond was created by Chemical Vapor Deposition (CVD) growth process and may include post-growth treatment.

**PROPORTIONS**



Sample Image Used

**CLARITY CHARACTERISTICS**



**KEY TO SYMBOLS**

Red symbols indicate internal characteristics.  
Green symbols indicate external characteristics.

**COLOR**

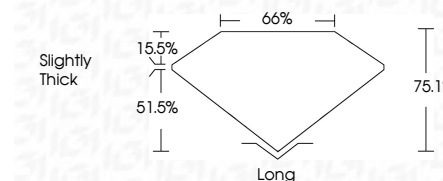
D E F G H I J Faint Very Light Light

**CLARITY**

IF	VS <sup>1-2</sup>	VS <sup>1-2</sup>	SI <sup>1-2</sup>	I <sup>1-3</sup>
Internally Flawless	Very Very Slightly Included	Very Slightly Included	Slightly Included	Included



April 30, 2024  
IGI Report Number **LG632476973**  
Description **LABORATORY GROWN DIAMOND**  
Shape and Cutting Style **EMERALD CUT**  
Measurements **11.90 X 7.63 X 5.73 MM**  
**GRADING RESULTS**  
Carat Weight **5.55 CARATS**  
Color Grade **FANCY YELLOW**  
Clarity Grade **VVS 2**



**ADDITIONAL GRADING INFORMATION**

Polish **EXCELLENT**  
Symmetry **EXCELLENT**  
Fluorescence **NONE**  
Inscription(s)  **LG632476973**  
Comments: This Laboratory Grown Diamond was created by Chemical Vapor Deposition (CVD) growth process and may include post-growth treatment.



**IGI**

April 30, 2024  
IGI Report No. LG632476973  
EMERALD CUT

5.55 CARATS  
FANCY YELLOW  
VVS 2  
75.1%  
66%  
Slightly Thick

11.90 X 7.63 X 5.73 MM  
Color Grade  
Clarity Grade  
Depth  
Table  
Girdle

Long  
EXCELLENT  
NONE  
NONE  
IGI LG632476973

Comments: This Laboratory Grown Diamond was created by Chemical Vapor Deposition (CVD) growth process and may include post-growth treatment.