

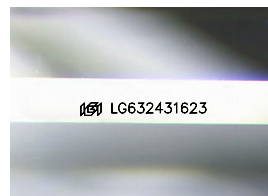
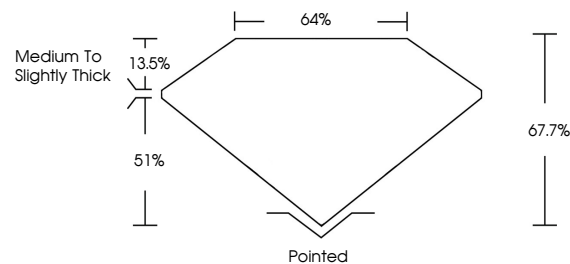


ELECTRONIC COPY

LABORATORY GROWN DIAMOND REPORT

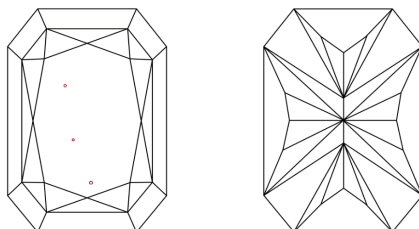
LG632431623
Report verification at lgi.org

PROPORTIONS



Sample Image Used

CLARITY CHARACTERISTICS



KEY TO SYMBOLS

Red symbols indicate internal characteristics.
Green symbols indicate external characteristics.

COLOR

D E F G H I J Faint Very Light Light

CLARITY

IF	WVS ¹⁻²	VS ¹⁻²	SI ¹⁻²	I ¹⁻³
Internally Flawless	Very Very Slightly Included	Very Slightly Included	Slightly Included	Included



© IGI 2020, International Gemological Institute

FD - 10 20

www.igi.org

DIAMOND REPORT



April 30, 2024

IGI Report Number **LG632431623**Description **LABORATORY GROWN DIAMOND**

Shape and Cutting Style

CUT CORNERED
RECTANGULAR MODIFIED
BRILLIANT

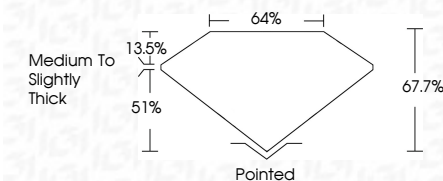
Measurements **8.43 X 5.69 X 3.85 MM**

GRADING RESULTS

Carat Weight 1.57 CARAT

Color Grade E

Clarity Grade VS 1



ADDITIONAL GRADING INFORMATION

Polish **EXCELLENT**Symmetry **EXCELLENT**Fluorescence **NONE**Inscription(s) LG632431623

Comments: This Laboratory Grown Diamond was created by Chemical Vapor Deposition (CVD) growth process and may include post-growth treatment.
Type IIa



IG

April 30, 2024	Report No. LG53243 1623
GUT CUT CORNERED RECT. MODIFIED BRILLIANT	
4.43 X 5.69 X 3.86 MM	1.57 CARAT
Carat Weight	Vs 1
Color	67.7%
Clarity	64%
Depth	Medium to Slightly Thick
Table	Cut
Grade	Polished
	EXCELLENT
	EXCELLENT
	NONE
	1691 LG53243 1623
Comments:	
This Laboratory Grown Diamond was created by Chemical Vapor Deposition (CVD) growth process and may include some treatment.	
Type Ila	