



**ELECTRONIC COPY**

LG632429654  
Report verification at igi.org



May 3, 2024

IGI Report Number **LG632429654**

Description **LABORATORY GROWN DIAMOND**

Shape and Cutting Style **ROUND BRILLIANT**

Measurements **9.39 - 9.45 X 5.86 MM**

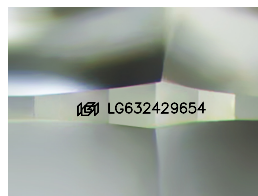
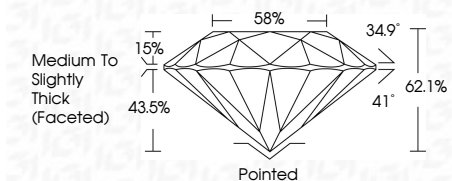
**GRADING RESULTS**

Carat Weight **3.23 CARATS**

Color Grade **E**

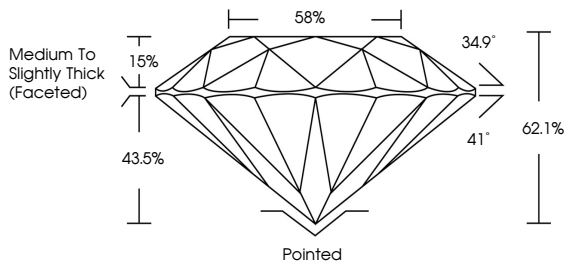
Clarity Grade **VS 1**

Cut Grade **IDEAL**

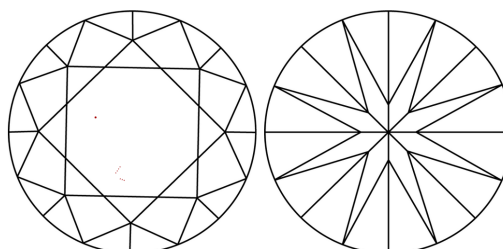


Sample Image Used

**PROPORTIONS**



**CLARITY CHARACTERISTICS**



**KEY TO SYMBOLS**

Red symbols indicate internal characteristics.  
Green symbols indicate external characteristics.

**COLOR**

D E F G H I J Faint Very Light Light

**CLARITY**

IF	VS <sup>1-2</sup>	VS <sup>1-2</sup>	SI <sup>1-2</sup>	I <sup>1-3</sup>
Internally Flawless	Very Very Slightly Included	Very Slightly Included	Slightly Included	Included

**ADDITIONAL GRADING INFORMATION**

Polish **EXCELLENT**

Symmetry **EXCELLENT**

Fluorescence **NONE**

Inscription(s) **IGI LG632429654**

Comments: This Laboratory Grown Diamond was created by Chemical Vapor Deposition (CVD) growth process and may include post-growth treatment. Type IIa



**IGI**



May 3, 2024  
IGI Report No LG632429654  
**ROUND BRILLIANT**

**3.23 CARATS**  
E

**9.39 - 9.45 X 5.86 MM**

Carat Weight  
Color Grade  
Clarity Grade  
Depth  
Table  
Girdle

**VS 1**  
**IDEAL**  
62.1%  
58%

Medium To Slightly Thick (Faceted)

Pointed  
**EXCELLENT**  
**EXCELLENT**  
**NONE**  
**NONE**

Culet  
Polish  
Symmetry  
Fluorescence  
Inscription(s)

IGI LG632429654

Comments: This Laboratory Grown Diamond was created by Chemical Vapor Deposition (CVD) growth process and may include post-growth treatment. Type IIa