



**ELECTRONIC COPY**

## LABORATORY GROWN DIAMOND REPORT

April 26, 2024	
IGI Report Number	LG632427223
Description	LABORATORY GROWN DIAMOND
Shape and Cutting Style	ROUND BRILLIANT
Measurements	6.57 - 6.60 X 4.08 MM

## GRADING RESULTS

Carat Weight	1.10 CARAT
Color Grade	E
Clarity Grade	VS 2
Cut Grade	IDEAL

### ADDITIONAL GRADING INFORMATION

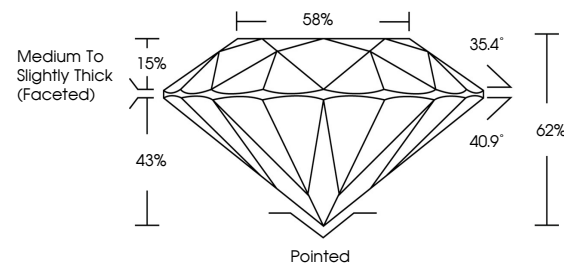
Polish	EXCELLENT
Symmetry	EXCELLENT
Fluorescence	NONE
Inscription(s)	 LG632427223

Comments: This Laboratory Grown Diamond was created by Chemical Vapor Deposition (CVD) growth process and may include post-growth treatment.  
Type IIa

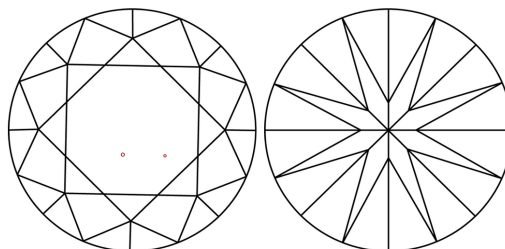
## LABORATORY GROWN DIAMOND REPORT

LG632427223  
Report verification at [igi.org](https://www.igi.org)

## PROPORTIONS



## CLARITY CHARACTERISTICS



## KEY TO SYMBOLS

Red symbols indicate internal characteristics.  
Green symbols indicate external characteristics.

LABORATORY GROWN  
DIAMOND REPORT

## GRADING SCALES

## CLARITY

IF	VVS <sup>1-2</sup>	VS <sup>1-2</sup>	SI <sup>1-2</sup>	I <sup>1-3</sup>
Internally Flawless	Very Very Slightly Included	Very Slightly Included	Slightly Included	Included

**COLOR**

D E F G H I J Faint Very Light Light



Sample Image Used

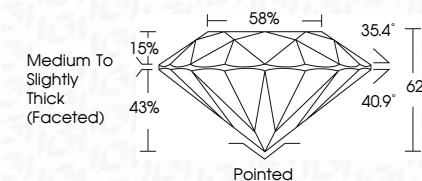


© IGI 2020, International Gemological Institute

FD - 10 20



April 26, 2024	
IGI Report Number	LG632427223
Description	LABORATORY GROWN DIAMOND
Shape and Cutting Style	ROUND BRILLIANT
Measurements	6.57 - 6.60 X 4.08 MM
<b>GRADING RESULTS</b>	
Carat Weight	1.10 CARAT
Color Grade	E
Clarity Grade	VS 2
Cut Grade	IDEAL



### ADDITIONAL GRADING INFORMATION

Polish	EXCELLENT
Symmetry	EXCELLENT
Fluorescence	NONE
Inscription(s)	<del>LG6</del> LG632427223
Comments: This Laboratory Grown Diamond was created by Chemical Vapor Deposition (CVD) growth process and may include post-growth treatment.	
Type IIa	

April 26, 2024	1.10 CARAT
Report No. LG639247223	VS 2
ROUND BRILLIANT	IDEAL
	62%
	85%
	Medium to slightly Thick Faceted
	Polished
	EXCELLENT
	EXCELLENT
	NONE
	681 LG639247223

Comments:

This Laboratory Grown Diamond was created by Chemical Vapor Deposition (CVD) growth process may include some growth treatment.