



ELECTRONIC COPY

LABORATORY GROWN DIAMOND REPORT

May 1, 2024	
IGI Report Number	LG632423124
Description	LABORATORY GROWN DIAMOND
Shape and Cutting Style	ROUND BRILLIANT
Measurements	10.12 - 10.17 X 6.22 MM

GRADING RESULTS

Carat Weight	4.02 CARATS
Color Grade	G
Clarity Grade	VS 1
Cut Grade	IDEAL

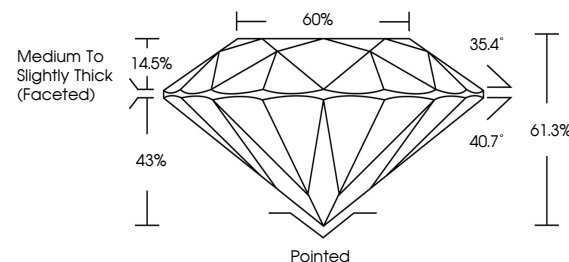
ADDITIONAL GRADING INFORMATION

Polish	EXCELLENT
Symmetry	EXCELLENT
Fluorescence	NONE
Inscription(s)	151 LG632423124

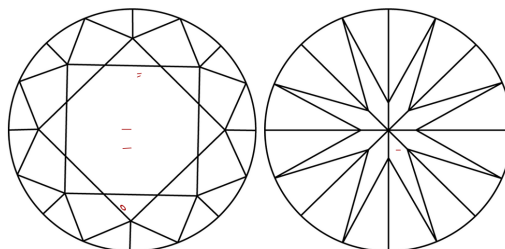
Comments: This Laboratory Grown Diamond was created by Chemical Vapor Deposition (CVD) growth process and may include post-growth treatment.
Type IIa

LG632423124
Report verification at lgi.org

PROPORTIONS

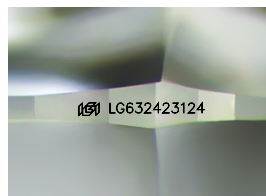


CLARITY CHARACTERISTICS



KEY TO SYMBOLS

Red symbols indicate internal characteristics.
Green symbols indicate external characteristics.



Sample Image Used

COLOR

D E F G H I J Faint Very Light Light

CLARITY

IF	VVS ¹⁻²	VS ¹⁻²	SI ¹⁻²	I ¹⁻³
Internally Flawless	Very Very Slightly Included	Very Slightly Included	Slightly Included	Included



© IGI 2020, International Gemological Institute

FD - 10 20

www.igi.org

DIAMOND REPORT



May 1, 2024

IGI Report Number **LG632423124**Description **LABORATORY GROWN DIAMOND**Shape and Cutting Style **ROUND BRILLIANT**

Measurements 10.12 - 10.17 X 6.22 MM

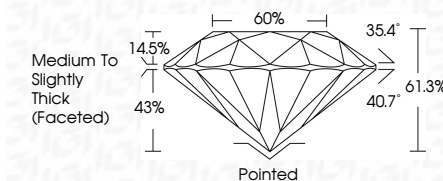
GRADING RESULTS

Carat Weight **4.02 CARATS**

Color Grade **G**

Clarity Grade VS 1

Cut Grade **IDEAL**



ADDITIONAL GRADING INFORMATION

Polish **EXCELLENCE**Symmetry **EXCELLENCE**

Fluorescence NONI

Inscription(s) LG632423124

Comments: This Laboratory Grown Diamond was created by Chemical Vapor Deposition (CVD) growth process and may include post-growth treatment.
Type IIa



May 1, 2024	GI Report No. LG302623124	10.12 - 10.17 W 4.22 MM	VS 1	Pointed	
GRINDING	Color Grade	Clarity Grade	IDEAL	EXCELLENT	
BRILLIANT	Carat Weight	Cut Grade	61.3%	EXCELLENT	
	10.12 - 10.17 W 4.22 MM	Table	60%	NONE	
		Girdle	Medium to Slightly Thick (Faceted)	1691 LG302623124	
		Culet			
		Polish			
		Symmetry			
		Fluorescence			
		Inscriptions(s)			
<p>Comments: Gemstone is a Gemstone, Gemstone Diamond was treated by Chemical Vapor Deposition (CVD) growth process and may include post-growth treatment.</p> <p>Type IIC</p>					