

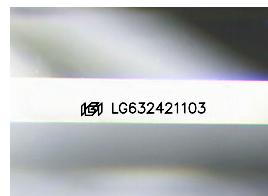
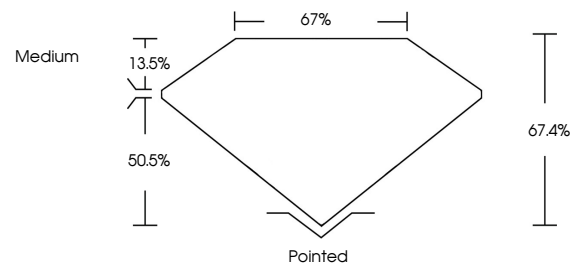


ELECTRONIC COPY

LABORATORY GROWN DIAMOND REPORT

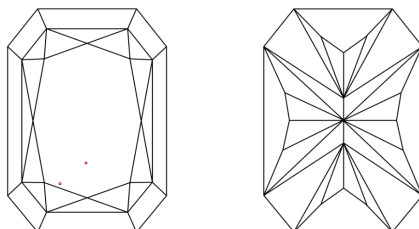
LG632421103
Report verification at lgi.org

PROPORTIONS



Sample Image Used

CLARITY CHARACTERISTICS



KEY TO SYMBOLS

Red symbols indicate internal characteristics.
Green symbols indicate external characteristics.

COLOR

D E F G H I J Faint Very Light Light

CLARITY

IF	WVS ¹⁻²	VS ¹⁻²	SI ¹⁻²	I ¹⁻³
Internally Flawless	Very Very Slightly Included	Very Slightly Included	Slightly Included	Included



© IGI 2020, International Gemological Institute

FD - 10 20

www.igi.org

DIAMOND REPORT



April 30, 2024

IGI Report Number **LG632421103**Description **LABORATORY GROWN DIAMOND**

Shape and Cutting Style

CUT CORNERED
RECTANGULAR MODIFIED
BRILLIANT

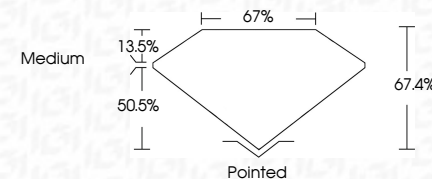
Measurements **8.21 X 5.77 X 3.89 MM**

GRADING RESULTS

Carat Weight **1.58 CARAT**

Color Grade	F
-------------	---

Clarity Grade VS 1



ADDITIONAL GRADING INFORMATION

Polish **EXCELLENT**Symmetry **EXCELLENT**Fluorescence **NONE**Inscription(s) LG632421103

Comments: This Laboratory Grown Diamond was created by Chemical Vapor Deposition (CVD) growth process and may include post-growth treatment.
Type IIa



IG

April 30, 2024	GI Report No.IG639242103	1.58 CARAT	V/S 1	Polished	Comments: This is a Chemically Grown Diamond was created by Chemical Vapor Deposition (CVD) growth process and may include post-growth treatment. Type IIa
GI CUT CORNBED RECT. MODIFIED BRILLIANT	9.21 X 5.77 X 3.89 MM	F	67.4%	EXCELLENT	
	Color Grade		67%	EXCELLENT	
	Clarity Grade		Medium	NONE	
	Depth			68/IG639242103	
	Table			Symmetry	
	Girdle			Fluorescence	
				Inscription(s)	
	Culet				
	Poish				