

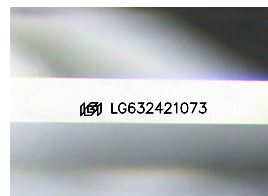
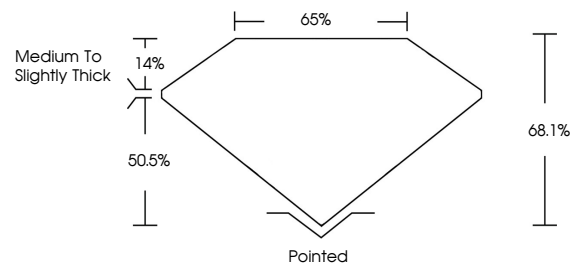


**ELECTRONIC COPY**

## LABORATORY GROWN DIAMOND REPORT

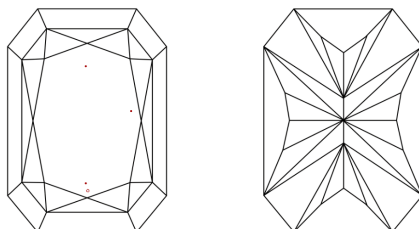
LG632421073  
Report verification at [lgi.org](https://lgi.org)

## PROPORTIONS



Sample Image Used

## CLARITY CHARACTERISTICS



## KEY TO SYMBOLS

Red symbols indicate internal characteristics.  
Green symbols indicate external characteristics.

## COLOR

D E F G H I J Faint Very Light Light

## CLARITY

IF	VVS <sup>1-2</sup>	VS <sup>1-2</sup>	SI <sup>1-2</sup>	I <sup>1-3</sup>
Internally Flawless	Very Very Slightly Included	Very Slightly Included	Slightly Included	Included



© IGI 2020, International Gemological Institute

FD - 10 20

**www.igi.org**

## DIAMOND REPORT



April 29, 2024

IGI Report Number **LG632421073**Description **LABORATORY GROWN DIAMOND**

Shape and Cutting Style

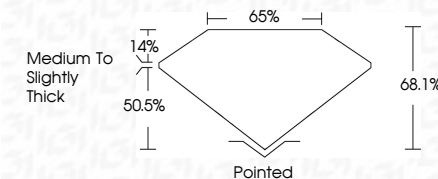
Measurements **8.14 X 5.73 X 3.90 MM**

## GRADING RESULTS

Carat Weight 1.57 CARAT

Color Grade E

Clarity Grade VS 1



### ADDITIONAL GRADING INFORMATION

Polish **EXCELLENT**Symmetry **EXCELLENT**Fluorescence **NONE**Inscription(s)  LG632421073

Comments: This Laboratory Grown Diamond was created by Chemical Vapor Deposition (CVD) growth process and may include post-growth treatment.  
Type IIa



IG

April 29, 2024	CU REPORTED RECT. MODIFIED BRILLIANT	VS 1	Paired
GI CORNED RECT. MODIFIED BRILLIANT	1.57 CARAT	68.1%	EXCELLENT
		65%	EXCELLENT
		Medium to Slightly Thick	NONE
			#61UG593621073

Comments:

The Laboratory Crown Diamond was  
 a CVD growth process and may include  
 post-growth treatment.

Type Ila