

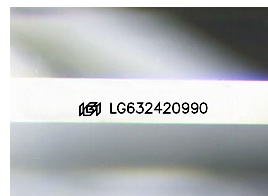
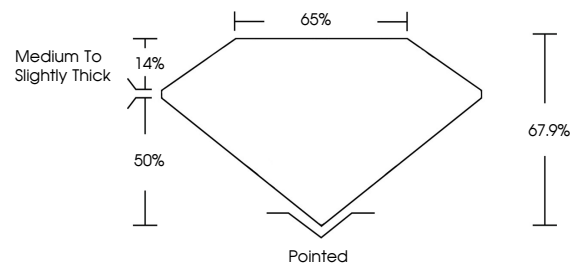


ELECTRONIC COPY

LABORATORY GROWN DIAMOND REPORT

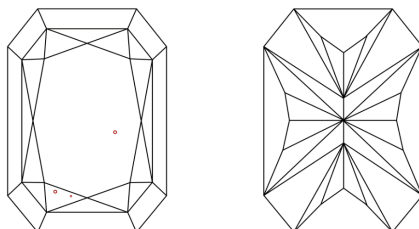
LG632420990
Report verification at lgi.org

PROPORTIONS



Sample Image Used

CLARITY CHARACTERISTICS



KEY TO SYMBOLS

Red symbols indicate internal characteristics.
Green symbols indicate external characteristics.

COLOR

D E F G H I J Faint Very Light Light

CLARITY

IF	WVS ¹⁻²	VS ¹⁻²	SI ¹⁻²	I ¹⁻³
Internally Flawless	Very Very Slightly Included	Very Slightly Included	Slightly Included	Included



© IGI 2020, International Gemological Institute

FD - 10 20

www.igi.org

DIAMOND REPORT



April 29, 2024

IGI Report Number **LG632420990**

Description	LABORATORY GROWN DIAMOND
-------------	--------------------------

Shape and Cutting Style

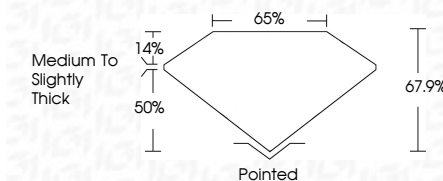
Measurements **8.33 X 5.55 X 3.77 MM**

GRADING RESULTS

Carat Weight 1.52 CARAT

Color Grade D

Clarity Grade VS 1



ADDITIONAL GRADING INFORMATION

Polish **EXCELLENT**Symmetry **EXCELLENT**Fluorescence **NONE**Inscription(s) LG632420990

Comments: This Laboratory Grown Diamond was created by Chemical Vapor Deposition (CVD) growth process and may include post-growth treatment.
Type IIa



April 29, 2024	Report No. GSA32405990	1.52 CARAT
CU CORNERED RECT. MODIFIED BRILLIANT		
3.33 X 5.95 X 3.77 MM		
Carat Weight	VS 1	
Color Grade	67.9%	
Clarity Grade	65%	
Depth	Medium to Slightly Thick	
Table		
Girdle		
Culet	Pointed	
Polish	EXCELLENT	
Symmetry	EXCELLENT	
Fluorescence	NONE	
Measurements(s)	See GSA32405990	

Comments:
This Laboratory Grown Diamond was created by Chemical Vapor Deposition (CVD) growth process and may include post-growth treatment.