



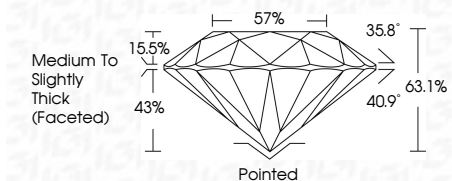
ELECTRONIC COPY

LG632415754 Report verification at igi.org



May 3, 2024 IGI Report Number LG632415754 Description LABORATORY GROWN DIAMOND Shape and Cutting Style ROUND BRILLIANT Measurements 9.18 - 9.26 X 5.81 MM

GRADING RESULTS Carat Weight 3.08 CARATS Color Grade H Clarity Grade VS 1 Cut Grade EXCELLENT

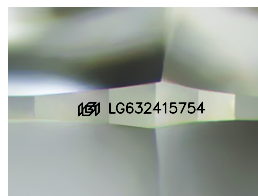


ADDITIONAL GRADING INFORMATION Polish EXCELLENT Symmetry EXCELLENT Fluorescence NONE Inscription(s) LG632415754 Comments: This Laboratory Grown Diamond was created by Chemical Vapor Deposition (CVD) growth process and may include post-growth treatment. Type IIa



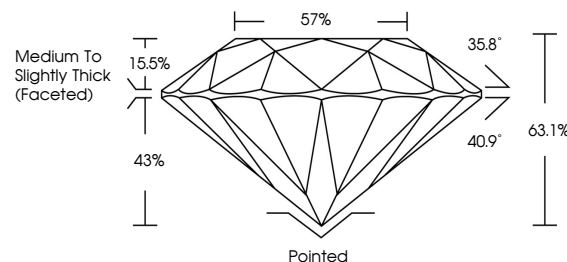
May 3, 2024 IGI Report No LG632415754 ROUND BRILLIANT 9.18 - 9.26 X 5.81 MM 3.08 CARATS H VS 1 EXCELLENT 63.1% 57% Medium To Slightly Thick (Faceted) Pointed EXCELLENT EXCELLENT NONE NONE LG632415754

Comments: This Laboratory Grown Diamond was created by Chemical Vapor Deposition (CVD) growth process and may include post-growth treatment. Type IIa

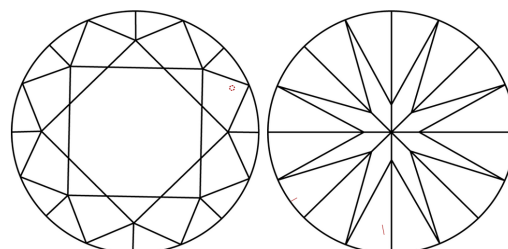


Sample Image Used

PROPORTIONS



CLARITY CHARACTERISTICS



KEY TO SYMBOLS

Red symbols indicate internal characteristics. Green symbols indicate external characteristics.

COLOR

D E F G H I J Faint Very Light Light

CLARITY

Table with columns: IF, VS 1-2, VS 1-2, SI 1-2, I 1-3 and rows: Internally Flawless, Very Very Slightly Included, Very Slightly Included, Slightly Included, Included



May 3, 2024 IGI Report Number LG632415754 Description LABORATORY GROWN DIAMOND Shape and Cutting Style ROUND BRILLIANT Measurements 9.18 - 9.26 X 5.81 MM

GRADING RESULTS Carat Weight 3.08 CARATS Color Grade H Clarity Grade VS 1 Cut Grade EXCELLENT

ADDITIONAL GRADING INFORMATION Polish EXCELLENT Symmetry EXCELLENT Fluorescence NONE Inscription(s) LG632415754

Comments: This Laboratory Grown Diamond was created by Chemical Vapor Deposition (CVD) growth process and may include post-growth treatment. Type IIa