

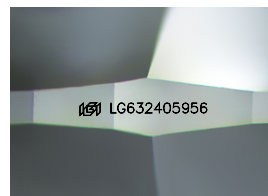
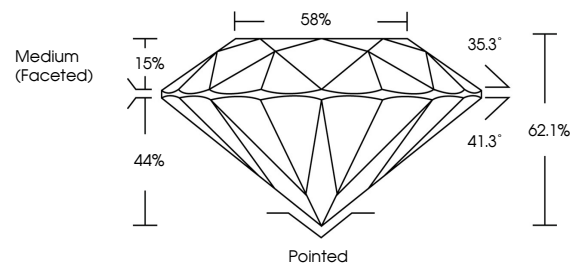


ELECTRONIC COPY

LABORATORY GROWN DIAMOND REPORT

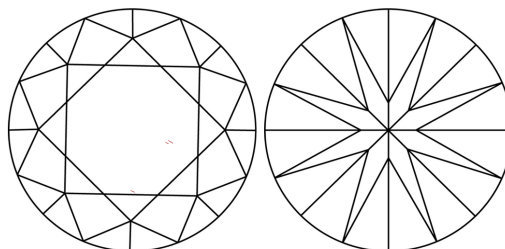
LG632405956
Report verification at igi.org

PROPORTIONS



Sample Image Used

CLARITY CHARACTERISTICS



KEY TO SYMBOLS

Red symbols indicate internal characteristics.
Green symbols indicate external characteristics.

COLOR

D E F G H I J Faint Very Light Light

CLARITY

IF	VVS ¹⁻²	VS ¹⁻²	SI ¹⁻²	I ¹⁻³
Internally Flawless	Very Very Slightly Included	Very Slightly Included	Slightly Included	Included



© IGI 2020, International Gemological Institute

FD - 10 20

www.igi.org

DIAMOND REPORT



May 4, 2024

IGI Report Number **LG632405956**

Description	LABORATORY GROWN DIAMOND
-------------	--------------------------

Shape and Cutting Style **ROUND BRILLIANT**

Measurements	6.99 - 7.02 X 4.35 MM
--------------	-----------------------

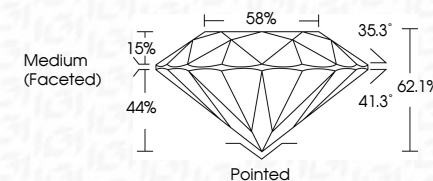
GRADING RESULTS

Carat Weight **1.32 CARAT**

Color Grade E

Clarity Grade **VVS 2**

Cut Grade **IDEAL**



ADDITIONAL GRADING INFORMATION

Polish **EXCELLENT**Symmetry **EXCELLENT**Fluorescence **NONE**Inscription(s) LG632405956

Comments: This Laboratory Grown Diamond was created by Chemical Vapor Deposition (CVD) growth process and may include post-growth treatment.
Type IIa



May 4, 2024	
GI Report No LG53205956	
ROUND BRILLIANT	
1.32 CARAT	
Color Weight	
Carat Grade	
7.02 X 4.35 MM	
Clarity Grade	
VVS 2	
Cut Grade	
IDEAL	
Depth	
62.1%	
Table	
58%	
Girdle	
Medium (Faceted)	
Pointed	
Excellent	
Excellent	
None	
LG53205956	
Comments:	
This Laboratory Grown Diamond was created by Chemical Vapor Deposition (CVD) growth process and may include surface treatment.	
Type IIA	