



ELECTRONIC COPY

LABORATORY GROWN DIAMOND REPORT

May 4, 2024
IGI Report Number LG632405515
Description LABORATORY GROWN DIAMOND
Shape and Cutting Style CUT CORNERED RECTANGULAR MODIFIED BRILLIANT
Measurements 8.63 X 6.22 X 4.38 MM

GRADING RESULTS

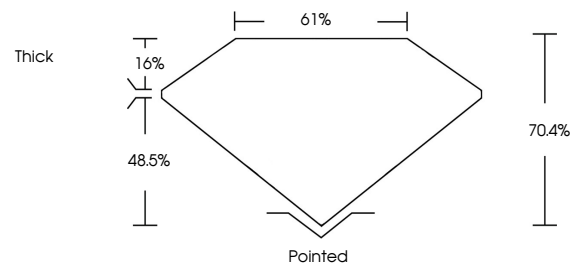
Carat Weight 2.27 CARATS
Color Grade FANCY INTENSE YELLOW
Clarity Grade VS 1

ADDITIONAL GRADING INFORMATION

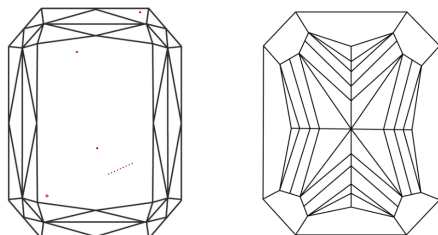
Polish EXCELLENT
Symmetry EXCELLENT
Fluorescence NONE
Inscription(s) IGI LG632405515

Comments: This Laboratory Grown Diamond was created by Chemical Vapor Deposition (CVD) growth process and may include post-growth treatment.

PROPORTIONS

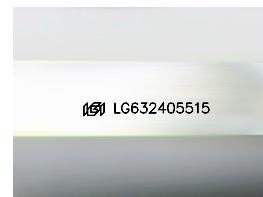


CLARITY CHARACTERISTICS



KEY TO SYMBOLS

Red symbols indicate internal characteristics.
Green symbols indicate external characteristics.



Sample Image Used

COLOR

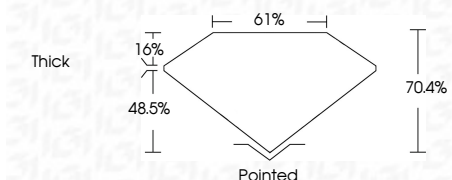
D E F G H I J Faint Very Light Light

CLARITY

| | | | | |
|---------------------|-----------------------------|------------------------|-------------------|----------|
| IF | VS 1-2 | VS 1-2 | SI 1-2 | I 1-3 |
| Internally Flawless | Very Very Slightly Included | Very Slightly Included | Slightly Included | Included |



May 4, 2024
IGI Report Number LG632405515
Description LABORATORY GROWN DIAMOND
Shape and Cutting Style CUT CORNERED RECTANGULAR MODIFIED BRILLIANT
Measurements 8.63 X 6.22 X 4.38 MM
GRADING RESULTS
Carat Weight 2.27 CARATS
Color Grade FANCY INTENSE YELLOW
Clarity Grade VS 1



ADDITIONAL GRADING INFORMATION

Polish EXCELLENT
Symmetry EXCELLENT
Fluorescence NONE
Inscription(s) IGI LG632405515
Comments: This Laboratory Grown Diamond was created by Chemical Vapor Deposition (CVD) growth process and may include post-growth treatment.



IGI

May 4, 2024
IGI Report No LG632405515
CUT CORNERED RECT. MODIFIED BRILLIANT
8.63 X 6.22 X 4.38 MM
2.27 CARATS
FANCY INTENSE YELLOW
VS 1
70.4%
61%
1.6%
Thick
Pointed
EXCELLENT
EXCELLENT
NONE
IGI LG632405515

Comments: This Laboratory Grown Diamond was created by Chemical Vapor Deposition (CVD) growth process and may include post-growth treatment.