



ELECTRONIC COPY

LG632405476
Report verification at igi.org



May 2, 2024
IGI Report Number **LG632405476**
Description **LABORATORY GROWN DIAMOND**
Shape and Cutting Style **SQUARE CUSHION MODIFIED BRILLIANT**
Measurements **8.01 X 7.84 X 5.50 MM**
GRADING RESULTS
Carat Weight **3.30 CARATS**
Color Grade **FANCY INTENSE YELLOW**
Clarity Grade **VVS 2**

LABORATORY GROWN DIAMOND REPORT

May 2, 2024
IGI Report Number **LG632405476**
Description **LABORATORY GROWN DIAMOND**
Shape and Cutting Style **SQUARE CUSHION MODIFIED BRILLIANT**
Measurements **8.01 X 7.84 X 5.50 MM**

GRADING RESULTS

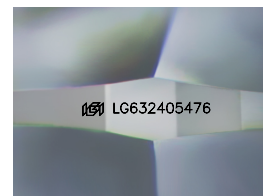
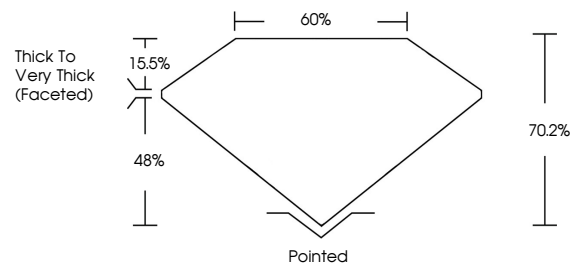
Carat Weight **3.30 CARATS**
Color Grade **FANCY INTENSE YELLOW**
Clarity Grade **VVS 2**

ADDITIONAL GRADING INFORMATION

Polish **EXCELLENT**
Symmetry **EXCELLENT**
Fluorescence **NONE**
Inscription(s) **IGI LG632405476**

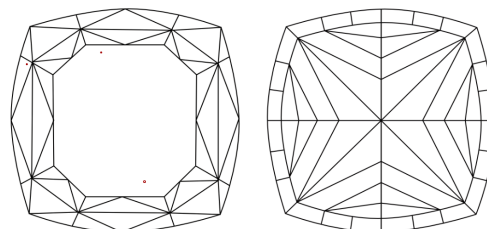
Comments: This Laboratory Grown Diamond was created by Chemical Vapor Deposition (CVD) growth process and may include post-growth treatment.

PROPORTIONS



Sample Image Used

CLARITY CHARACTERISTICS



KEY TO SYMBOLS

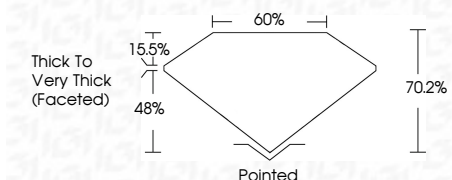
Red symbols indicate internal characteristics.
Green symbols indicate external characteristics.

COLOR

D E F G H I J Faint Very Light Light

CLARITY

IF	VS ¹⁻²	VS ¹⁻²	SI ¹⁻²	I ¹⁻³
Internally Flawless	Very Very Slightly Included	Very Slightly Included	Slightly Included	Included



ADDITIONAL GRADING INFORMATION

Polish **EXCELLENT**
Symmetry **EXCELLENT**
Fluorescence **NONE**
Inscription(s) **IGI LG632405476**
Comments: This Laboratory Grown Diamond was created by Chemical Vapor Deposition (CVD) growth process and may include post-growth treatment.



IGI

May 2, 2024
IGI Report No. **LG632405476**
SQUARE CUSHION MODIFIED BRILLIANT
8.01 X 7.84 X 5.50 MM
Carat Weight **3.30 CARATS**
Color Grade **FANCY INTENSE YELLOW**
Clarity Grade **VVS 2**
Depth **70.2%**
Table **60%**
Girdle **Thick to Very Thick (Faceted)**
Culet **Pointed**
Polish **EXCELLENT**
Symmetry **EXCELLENT**
Fluorescence **NONE**
Inscription(s) **IGI LG632405476**

Comments: This Laboratory Grown Diamond was created by Chemical Vapor Deposition (CVD) growth process and may include post-growth treatment.