



**INTERNATIONAL  
GEMOLOGICAL  
INSTITUTE**

**ELECTRONIC COPY**

## LABORATORY GROWN DIAMOND REPORT

|                         |                             |
|-------------------------|-----------------------------|
| April 25, 2024          |                             |
| IGI Report Number       | LG632400859                 |
| Description             | LABORATORY GROWN<br>DIAMOND |
| Shape and Cutting Style | ROUND BRILLIANT             |
| Measurements            | 7.03 - 7.09 X 4.27 MM       |

## GRADING RESULTS

|               |            |
|---------------|------------|
| Carat Weight  | 1.31 CARAT |
| Color Grade   | D          |
| Clarity Grade | VS 2       |
| Cut Grade     | IDEAL      |

### ADDITIONAL GRADING INFORMATION

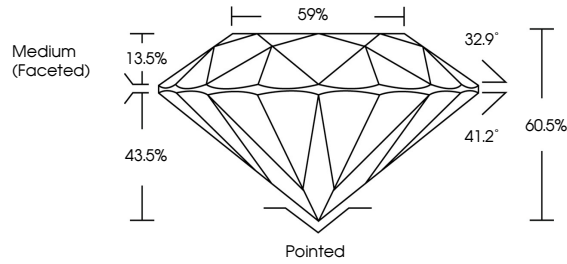
|                |   |
|----------------|---|
| Polish         | EXCELLENT   |
| Symmetry       | EXCELLENT   |
| Fluorescence   | NONE  |
| Inscription(s) |  LG632400859 |

Comments: This Laboratory Grown Diamond was created by Chemical Vapor Deposition (CVD) growth process and may include post-growth treatment.  
Type IIa

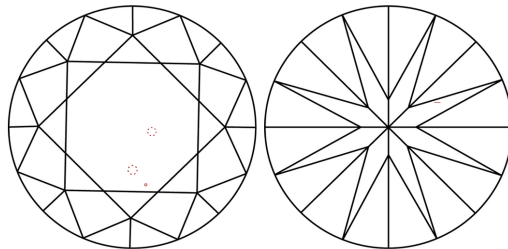
## LABORATORY GROWN DIAMOND REPORT

LG632400859  
Report verification at [igi.org](https://igi.org)

## PROPORTIONS



## CLARITY CHARACTERISTICS



## KEY TO SYMBOLS

Red symbols indicate internal characteristics.  
Green symbols indicate external characteristics.

LABORATORY GROWN  
DIAMOND REPORT

## GRADING SCALES

## CLARITY

| IF                     | VVS <sup>1-2</sup>             | VS <sup>1-2</sup>         | SI <sup>1-2</sup>    | I <sup>1-3</sup> |
|------------------------|--------------------------------|---------------------------|----------------------|------------------|
| Internally<br>Flawless | Very Very<br>Slightly Included | Very<br>Slightly Included | Slightly<br>Included | Included         |

**COLOR**

|   |   |   |   |   |   |   |       |            |       |
|---|---|---|---|---|---|---|-------|------------|-------|
| D | E | F | G | H | I | J | Faint | Very Light | Light |
|---|---|---|---|---|---|---|-------|------------|-------|



Sample Image Used



© IGI 2020, International Gemological Institute

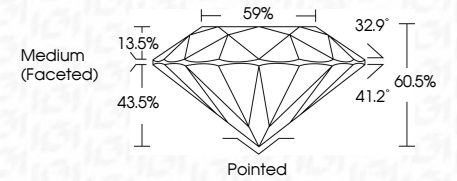
FD - 10 20

## LABORATORY GROWN DIAMOND REPORT

|                         |                             |
|-------------------------|-----------------------------|
| April 25, 2024          |                             |
| IGI Report Number       | LG632400859                 |
| Description             | LABORATORY GROWN<br>DIAMOND |
| Shape and Cutting Style | ROUND BRILLIANT             |
| Measurements            | 7.03 - 7.09 X 4.27 MM       |

## GRADING RESULTS

|               |            |
|---------------|------------|
| Carat Weight  | 1.31 CARAT |
| Color Grade   | D          |
| Clarity Grade | VS 2       |
| Cut Grade     | IDEAL      |



### ADDITIONAL GRADING INFORMATION

|  |   |
|--|---|
| Polish   | EXCELLENT   |
| Symmetry   | EXCELLENT   |
| Fluorescence   | NONE  |
| Inscription(s)   |  LG632400859 |
| Comments: This Laboratory Grown Diamond was created by Chemical Vapor Deposition (CVD) growth process and may include post-growth treatment. |   |
| Type IIa   |   |



IGI

|                |                       |            |
|----------------|-----------------------|------------|
|                | V6.2                  | D          |
| Ideal          | ID5AL                 | 1.31 CABAT |
| Cut Grade      | Very Good             |            |
| Color Grade    | G9                    |            |
| Clarity Grade  | S1                    |            |
| Carat Weight   | 7.08 x 7.05 X 4.27 MM |            |
|                |                       |            |
| Current Price  | \$2,500 - \$3,000     |            |
| Depth          | 60.6%                 |            |
| Table          | 59%                   |            |
| Data           | Medium (Faceted)      |            |
| Grade          | Poined                |            |
| Culet          | EXCELLENT             |            |
| Polish         | EXCELLENT             |            |
| Symmetry       | EXCELLENT             |            |
| Fluorescence   | NONE                  |            |
| Inscription(s) | #G1 G632#0089         |            |
|                |                       |            |

Comments:

The Laboratory Growth Diamond was created by Chemical Vapor Deposition (CVD) growth process and may include post-growth treatment.  
 Type IIC