



ELECTRONIC COPY

LABORATORY GROWN DIAMOND REPORT

April 29, 2024	
IGI Report Number	LG631440955
Description	LABORATORY GROWN DIAMOND
Shape and Cutting Style	ROUND BRILLIANT
Measurements	9.04 - 9.09 X 5.46 MM

GRADING RESULTS

Carat Weight	2.76 CARATS
Color Grade	FANCY INTENSE PINK
Clarity Grade	VS 1
Cut Grade	IDEAL

ADDITIONAL GRADING INFORMATION

Polish	EXCELLENT
Symmetry	EXCELLENT
Fluorescence	SLIGHT
Inscription(s)	LG631440955

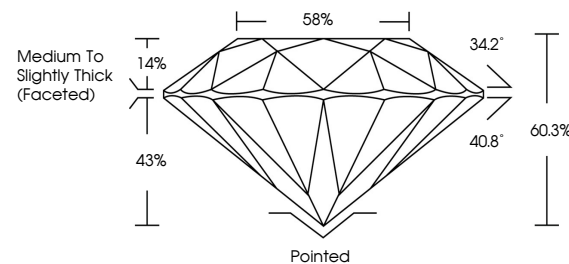
Comments: This Laboratory Grown Diamond was created by Chemical Vapor Deposition (CVD) growth process.
Indications of post-growth treatment.

LABORATORY GROWN DIAMOND REPORT

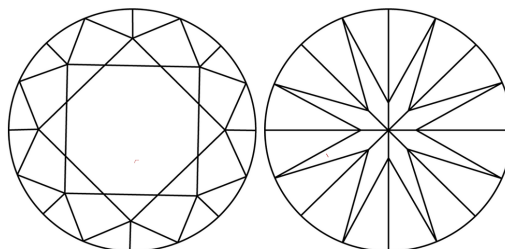
LG631440955

Report verification at igi.org

PROPORTIONS



CLARITY CHARACTERISTICS



KEY TO SYMBOLS

Red symbols indicate internal characteristics.
Green symbols indicate external characteristics.

LABORATORY GROWN
DIAMOND REPORT

GRADING SCALES

CLARITY

IF	VVS ¹⁻²	VS ¹⁻²	SI ¹⁻²	I ¹⁻³
Internally Flawless	Very Very Slightly Included	Very Slightly Included	Slightly Included	Included

COLOR

D	E	F	G	H	I	J	Faint	Very Light	Light
Light Tint			Fancy Light			Fancy	Fancy Intense		Fancy Vivid



Sample Image Used

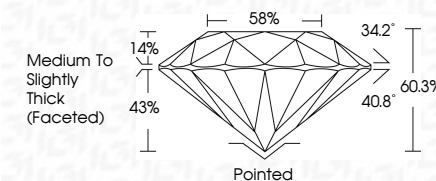


© IGI 2020, International Gemological Institute

FD - 10 20



April 29, 2024	
IGI Report Number	LG631440955
Description	LABORATORY GROWN DIAMOND
Shape and Cutting Style	ROUND BRILLIANT
Measurements	9.04 - 9.09 X 5.46 MM
GRADING RESULTS	
Carat Weight	2.76 CARATS
Color Grade	FANCY INTENSE PINK
Clarity Grade	VS 1
Cut Grade	IDEAL



ADDITIONAL GRADING INFORMATION

Polish	EXCELLENT
Symmetry	EXCELLENT
Fluorescence	SLIGHT
Inscription(s)	 LG631440955
<p>Comments: This Laboratory Grown Diamond was created by Chemical Vapor Deposition (CVD) growth process.</p> <p>Indications of post-growth treatment.</p>	

April 29, 2024	GI Report No LG631140955	27% CADATS FANCY INTENSE PINK	V/S 1 IDEAL 60.3% 85%	Pointed EXCELLENT EXCELLENT SLIGHT
ROUND BRILLIANT	G 9.04 - 9.09 X 5.46 MM	Color Weight Carat Grade	Clarity Grade Our Grade	Medium to Slightly Thick (Faceted)
		Cut Grade Depth Table Girdle	Our Grade	
				Polish Symmetry Fluorescence Inscriptions(s)
				#61 LG631140955
				Comments: This Fancy Gray Diamond was treated by Chemical Vapor Deposition (CVD) growth process. Indications of post-growth treatment.