



**ELECTRONIC COPY**

## LABORATORY GROWN DIAMOND REPORT

April 29, 2024	
IGI Report Number	LG631439061
Description	LABORATORY GROWN DIAMOND
Shape and Cutting Style	ROUND BRILLIANT
Measurements	6.99 - 7.01 X 4.26 MM

## GRADING RESULTS

Carat Weight	1.28 CARAT
Color Grade	E
Clarity Grade	VVS 2
Cut Grade	IDEAL

### ADDITIONAL GRADING INFORMATION

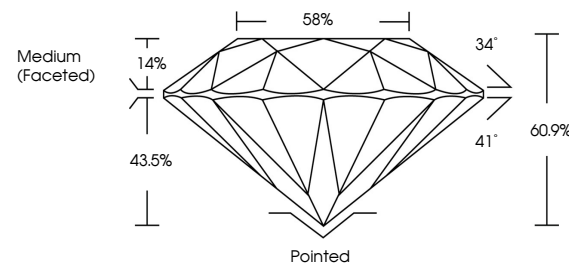
Polish	EXCELLENT
Symmetry	EXCELLENT
Fluorescence	NONE
Inscription(s)	 LG631439061

Comments: This Laboratory Grown Diamond was created by Chemical Vapor Deposition (CVD) growth process and may include post-growth treatment.  
Type IIa

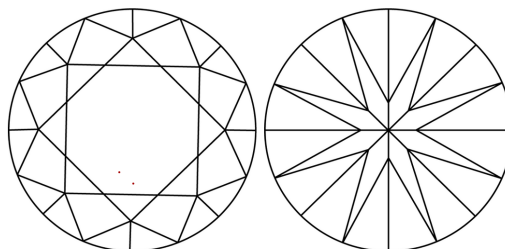
## LABORATORY GROWN DIAMOND REPORT

LG631439061  
Report verification at [igi.org](https://igi.org)

## PROPORTIONS



## CLARITY CHARACTERISTICS



### KEY TO SYMBOLS

Red symbols indicate internal characteristics.  
Green symbols indicate external characteristics.

LABORATORY GROWN  
DIAMOND REPORT

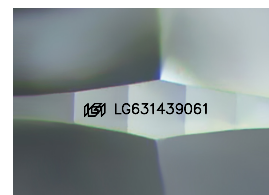
## GRADING SCALES

## CLARITY

IF	VVS <sup>1-2</sup>	VS <sup>1-2</sup>	SI <sup>1-2</sup>	I <sup>1-3</sup>
Internally Flawless	Very Very Slightly Included	Very Slightly Included	Slightly Included	Included

**COLOR**

D E F G H I J Faint Very Light Light



Sample Image Used



© IGI 2020, International Gemological Institute

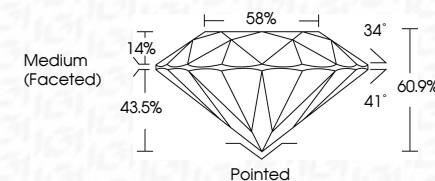
FD - 10 20

**www.igi.org**

## LABORATORY GROWN DIAMOND REPORT

April 29, 2024	
IGI Report Number	LG631439061
Description	LABORATORY GROWN DIAMOND
Shape and Cutting Style	ROUND BRILLIANT
Measurements	6.99 - 7.01 X 4.26 MM

Carat Weight	1.28 CARAT
Color Grade	E
Clarity Grade	VVS 2
Cut Grade	IDEAL



### ADDITIONAL GRADING INFORMATION

Polish	EXCELLENT
Symmetry	EXCELLENT
Fluorescence	NONE
Inscription(s)	 LG-631439061

Comments: This Laboratory Grown Diamond was created by Chemical Vapor Deposition (CVD) growth process and may include post-growth treatment.  
Type IIa



April 29, 2024	GI report No LG531439001	1.28 CARAT	W6 S 2	Pointed	Comments: This Crown Diamond was created by Chemical Vapor Deposition (CVD) growth process and may include post-growth treatment.
ROUND BRILLIANT			IDEAL	EXCELLENT	
			61%	NONE	
			56%		
			Medium (Faceted)	#6 LG531439001	
		Color Grade	Clarity Grade	Cut Grade	Depth
					Table
					Girdle
				Quiet	Polish
				Symmetry	Fluorescence
				Inscription(s)	
					Type IIA