



**ELECTRONIC COPY**

LG631426524  
Report verification at igi.org



May 6, 2024

IGI Report Number **LG631426524**

Description **LABORATORY GROWN DIAMOND**

Shape and Cutting Style **HEXAGONAL STEP CUT**

Measurements **8.27 X 7.13 X 4.45 MM**

**GRADING RESULTS**

Carat Weight **2.02 CARATS**

Color Grade **E**

Clarity Grade **INTERNALLY FLAWLESS**

May 6, 2024

IGI Report Number **LG631426524**

Description **LABORATORY GROWN DIAMOND**

Shape and Cutting Style **HEXAGONAL STEP CUT**

Measurements **8.27 X 7.13 X 4.45 MM**

**GRADING RESULTS**

Carat Weight **2.02 CARATS**

Color Grade **E**

Clarity Grade **INTERNALLY FLAWLESS**

**ADDITIONAL GRADING INFORMATION**

Polish **EXCELLENT**

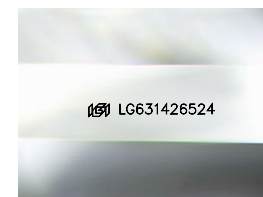
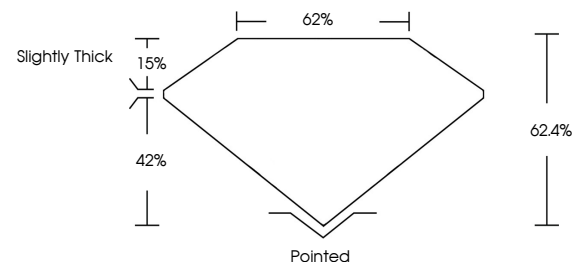
Symmetry **EXCELLENT**

Fluorescence **NONE**

Inscription(s) **IGI LG631426524**

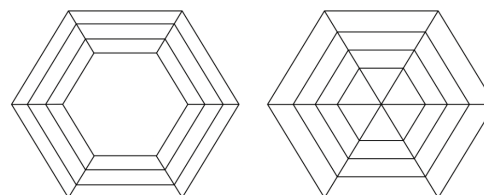
Comments: This Laboratory Grown Diamond was created by Chemical Vapor Deposition (CVD) growth process and may include post-growth treatment. Type IIa

**PROPORTIONS**



Sample Image Used

**CLARITY CHARACTERISTICS**



**KEY TO SYMBOLS**

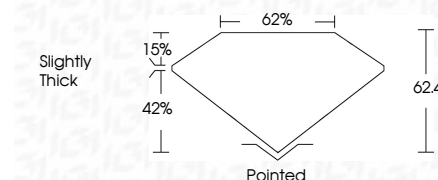
Red symbols indicate internal characteristics.  
Green symbols indicate external characteristics.

**COLOR**

D E F G H I J Faint Very Light Light

**CLARITY**

IF	VS <sup>1-2</sup>	VS <sup>1-2</sup>	SI <sup>1-2</sup>	I <sup>1-3</sup>
Internally Flawless	Very Very Slightly Included	Very Slightly Included	Slightly Included	Included



**ADDITIONAL GRADING INFORMATION**

Polish **EXCELLENT**

Symmetry **EXCELLENT**

Fluorescence **NONE**

Inscription(s) **IGI LG631426524**

Comments: This Laboratory Grown Diamond was created by Chemical Vapor Deposition (CVD) growth process and may include post-growth treatment. Type IIa



**IGI**



May 6, 2024  
IGI Report No LG631426524  
**HEXAGONAL STEP CUT**  
8.27 X 7.13 X 4.45 MM  
2.02 CARATS  
E  
Color Grade  
Depth 42.4%  
Table 15%  
Girdle 62%  
Slightly Thick  
Pointed  
Polish EXCELLENT  
Symmetry EXCELLENT  
Fluorescence NONE  
Inscription(s) IGI LG631426524

Comments: This Laboratory Grown Diamond was created by Chemical Vapor Deposition (CVD) growth process and may include post-growth treatment. Type IIa