



**ELECTRONIC COPY**

## LABORATORY GROWN DIAMOND REPORT

|                         |                             |
|-------------------------|-----------------------------|
| April 22, 2024          |                             |
| IGI Report Number       | LG631420964                 |
| Description             | LABORATORY GROWN<br>DIAMOND |
| Shape and Cutting Style | ROUND BRILLIANT             |
| Measurements            | 8.49 - 8.53 X 5.17 MM       |

## GRADING RESULTS

|               |             |
|---------------|-------------|
| Carat Weight  | 2.27 CARATS |
| Color Grade   | D           |
| Clarity Grade | VS 2        |
| Cut Grade     | IDEAL       |

### ADDITIONAL GRADING INFORMATION

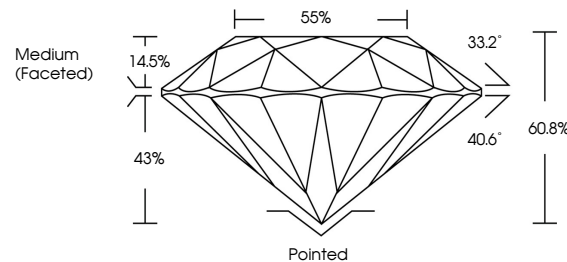
|                |                |
|----------------|----------------|
| Polish         | EXCELLENT      |
| Symmetry       | EXCELLENT      |
| Fluorescence   | NONE           |
| Inscription(s) | 13 LG631420964 |

Comments: As Grown - No indication of post-growth treatment.  
This Laboratory Grown Diamond was created by High Pressure High Temperature (HPHT) growth process.  
Type II

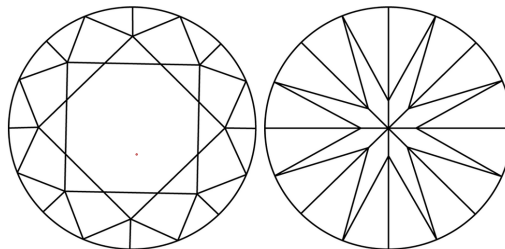
## LABORATORY GROWN DIAMOND REPORT

LG631420964  
Report verification at [igi.org](https://igi.org)

## PROPORTIONS



## CLARITY CHARACTERISTICS



### KEY TO SYMBOLS

Red symbols indicate internal characteristics.  
Green symbols indicate external characteristics.

LABORATORY GROWN  
DIAMOND REPORT

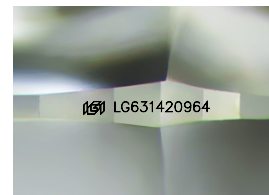
## GRADING SCALES

## CLARITY

| IF                  | VVS <sup>1-2</sup>          | VS <sup>1-2</sup>      | SI <sup>1-2</sup> | I <sup>1-3</sup> |
|---------------------|-----------------------------|------------------------|-------------------|------------------|
| Internally Flawless | Very Very Slightly Included | Very Slightly Included | Slightly Included | Included         |

**COLOR**

D E F G H I J Faint Very Light Light



Sample Image Used



© IGI 2020, International Gemological Institute

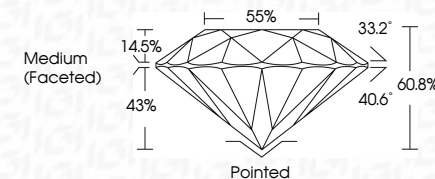
FD - 10 20

## LABORATORY GROWN DIAMOND REPORT

|                         |                             |
|-------------------------|-----------------------------|
| April 22, 2024          |                             |
| IGI Report Number       | LG631420964                 |
| Description             | LABORATORY GROWN<br>DIAMOND |
| Shape and Cutting Style | ROUND BRILLIANT             |
| Measurements            | 8.49 - 8.53 X 5.17 MM       |

## GRADING RESULTS

|               |             |
|---------------|-------------|
| Carat Weight  | 2.27 CARATS |
| Color Grade   | D           |
| Clarity Grade | VS 2        |
| Cut Grade     | IDEAL       |



### ADDITIONAL GRADING INFORMATION

|  |   |
|--|---|
| Polish   | EXCELLENT   |
| Symmetry   | EXCELLENT   |
| Fluorescence   | NONE  |
| Inscription(s)   |  LG631420964 |
| Comments: As Grown - No indication of post-growth treatment.                                       |   |
| This Laboratory Grown Diamond was created by High Pressure High Temperature (HPHT) growth process. |   |
| Type II  |   |



|                          |             |               |           |       |       |        |                  |         |           |              |                |                |  |
|--------------------------|-------------|---------------|-----------|-------|-------|--------|------------------|---------|-----------|--------------|----------------|----------------|--|
| April 22, 2024           | 2.27 CARATS | D             | Vs2       | IDEAL | 60.6% | 55%    | Medium (Faceted) | Painted | Excellent | EXCELLENT    | NONE           | #61UGS61428964 | Comments:<br>No indication of post-growth treatment.<br>The Laboratory Grown Diamond was created by High Pressure High Temperature (HPHT) growth process.<br>Type II |
| GI Report No.IGS31420944 | Color Grade | Clarity Grade | Cut Grade | Depth | Table | Girdle | Quiet            | Polish  | Symmetry  | Fluorescence | Inscription(s) |                |  |
| ROUND BRILLIANT          | 2.27 CARATS | D             | Vs2       | IDEAL | 60.6% | 55%    | Medium (Faceted) | Painted | Excellent | EXCELLENT    | NONE           | #61UGS61428964 |  |