



**ELECTRONIC COPY**

## LABORATORY GROWN DIAMOND REPORT

April 17, 2024	
IGI Report Number	LG631409120
Description	LABORATORY GROWN DIAMOND
Shape and Cutting Style	EMERALD CUT
Measurements	7.65 X 5.39 X 3.68 MM

## GRADING RESULTS

Carat Weight	1.51 CARAT
Color Grade	E
Clarity Grade	VVS 2

### ADDITIONAL GRADING INFORMATION

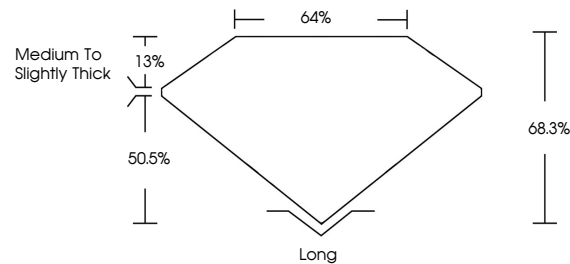
Polish	EXCELLENT
Symmetry	EXCELLENT
Fluorescence	NONE
Inscription(s)	 LG631409120

Comments: This Laboratory Grown Diamond was created by Chemical Vapor Deposition (CVD) growth process and may include post-growth treatment. Type IIa

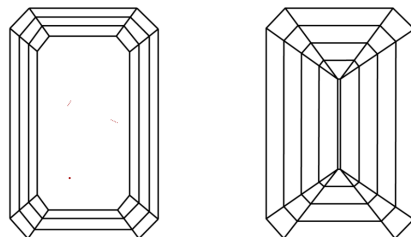
## LABORATORY GROWN DIAMOND REPORT

LG631409120  
Report verification at lgi.org

## PROPORTIONS



## CLARITY CHARACTERISTICS



## KEY TO SYMBOLS

Red symbols indicate internal characteristics.  
Green symbols indicate external characteristics.

LABORATORY GROWN  
DIAMOND REPORT

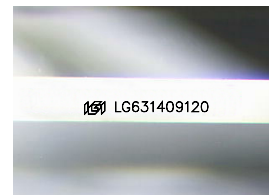
## GRADING SCALES

## CLARITY

IF	VVS <sup>1-2</sup>	VS <sup>1-2</sup>	SI <sup>1-2</sup>	I <sup>1-3</sup>
Internally Flawless	Very Very Slightly Included	Very Slightly Included	Slightly Included	Included

**COLOR**

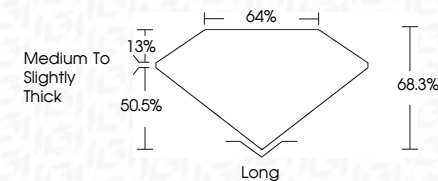
D E F G H I J Faint Very Light Light



Sample Image Used



April 17, 2024	
IGI Report Number	LG631409120
Description	LABORATORY GROWN DIAMOND
Shape and Cutting Style	EMERALD CUT
Measurements	7.65 X 5.39 X 3.68 MM
<b>GRADING RESULTS</b>	
Carat Weight	1.51 CARAT
Color Grade	E
Clarity Grade	VVS 2



### ADDITIONAL GRADING INFORMATION

Polish	EXCELLENT
Symmetry	EXCELLENT
Fluorescence	NONE
Inscription(s)	 LG631409120

Comments: This Laboratory Grown Diamond was created by Chemical Vapor Deposition (CVD) growth process and may include post-growth treatment.  
Type IIa



IG



© IGI 2020, International Gemological Institute

FD - 10 20



THIS DOCUMENT WAS PRODUCED WITH THE FOLLOWING SECURITY MEASURES: SPECIAL DOCUMENT PAPER, INK SCREENS, WATERMARK, BACKGROUND DESIGNS, HOLOGRAM AND OTHER SECURITY FEATURES NOT LISTED AND DO EXCEED DOCUMENT SECURITY INDUSTRY GUIDELINES

**www.igi.org**

April 17, 2024  
 IGI Report No L  
 EMERALD CITE

<b>7.65 X 5.90 X 3.68 MM</b>	<b>1.51 CARAT E</b>	<b>VVS 2</b>	<b>68.3%</b>	<b>68%</b>	<b>Medium To Slightly Thick</b>	<b>Long</b>	<b>EXCELLENT</b>	<b>EXCELLENT</b>	<b>NONE</b>	<b>4mm L G433 100100</b>
Carat Weight		Clarity Grade	Depth	Table	Girdle	Culet	Polish	Symmetry	Fluorescence	Identification

**Comments:**  
This Laboratory Grown Diamond was  
created by Chemical Vapor Deposition  
(CVD) growth process and may include  
post-growth treatment.