



**ELECTRONIC COPY**

**LABORATORY GROWN DIAMOND REPORT**

April 19, 2024  
 IGI Report Number **LG630455333**  
 Description **LABORATORY GROWN  
DIAMOND**  
 Shape and Cutting Style **CUT CORNERED RECTANGULAR  
MODIFIED BRILLIANT**  
 Measurements **7.03 X 5.03 X 3.35 MM**

**GRADING RESULTS**

Carat Weight **1.20 CARAT**  
 Color Grade **FANCY VIVID PINK**  
 Clarity Grade **VS 2**

**ADDITIONAL GRADING INFORMATION**

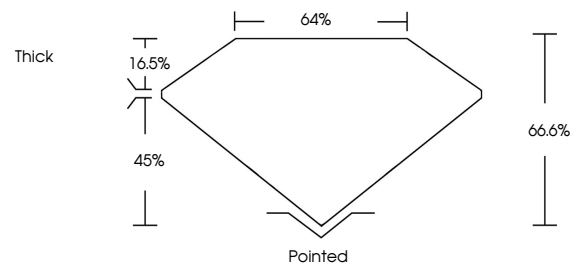
Polish **EXCELLENT**  
 Symmetry **EXCELLENT**  
 Fluorescence **SLIGHT**  
 Inscription(s) **IGI LG630455333**

Comments: This Laboratory Grown Diamond was created by Chemical Vapor Deposition (CVD) growth process.  
 Indications of post-growth treatment.

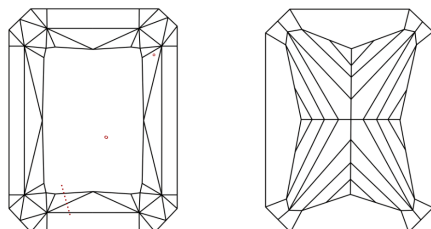
**LABORATORY GROWN DIAMOND REPORT**

**LG630455333**  
 Report verification at [igi.org](http://igi.org)

**PROPORTIONS**



**CLARITY CHARACTERISTICS**



**KEY TO SYMBOLS**

Red symbols indicate internal characteristics.  
 Green symbols indicate external characteristics.

**LABORATORY GROWN  
DIAMOND REPORT**

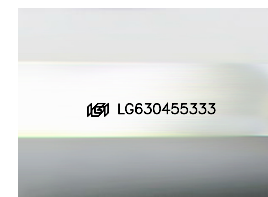
**GRADING SCALES**

**CLARITY**

IF	VVS <sup>1-2</sup>	VS <sup>1-2</sup>	SI <sup>1-2</sup>	I <sup>1-3</sup>
Internally Flawless	Very Very Slightly Included	Very Slightly Included	Slightly Included	Included

**COLOR**

D	E	F	G	H	I	J	Faint	Very Light	Light
Light Tint	Fancy Light	Fancy	Fancy Intense	Fancy Vivid					



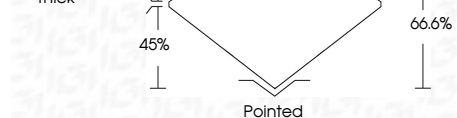
Sample Image Used

**LABORATORY GROWN DIAMOND REPORT**

April 19, 2024  
 IGI Report Number **LG630455333**  
 Description **LABORATORY GROWN  
DIAMOND**  
 Shape and Cutting Style **CUT CORNERED  
RECTANGULAR MODIFIED  
BRILLIANT**  
 Measurements **7.03 X 5.03 X 3.35 MM**

**GRADING RESULTS**

Carat Weight **1.20 CARAT**  
 Color Grade **FANCY VIVID PINK**  
 Clarity Grade **VS 2**



**ADDITIONAL GRADING INFORMATION**

Polish **EXCELLENT**  
 Symmetry **EXCELLENT**  
 Fluorescence **SLIGHT**  
 Inscription(s) **IGI LG630455333**  
 Comments: This Laboratory Grown Diamond was created by Chemical Vapor Deposition (CVD) growth process.  
 Indications of post-growth treatment.



April 19, 2024  
 IGI Report No. LG630455333  
**CUT CORNERED RECT. MODIFIED BRILLIANT**  
 7.03 X 5.03 X 3.35 MM  
 1.20 CARAT  
 FANCY VIVID PINK  
 VS 2  
 66.6%  
 45%  
 Thick  
 Pointed  
 EXCELLENT  
 EXCELLENT  
 SLIGHT  
 IGI LG630455333  
 Comments: This Laboratory Grown Diamond was created by Chemical Vapor Deposition (CVD) growth process.  
 Indications of post-growth treatment.