

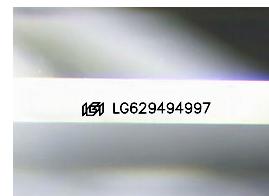
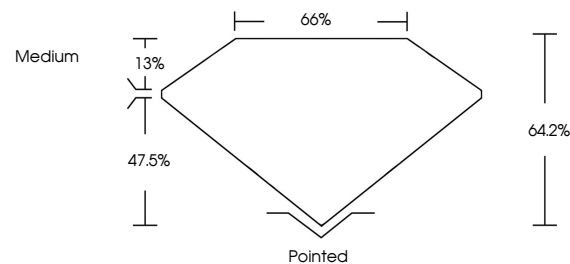


**ELECTRONIC COPY**

## LABORATORY GROWN DIAMOND REPORT

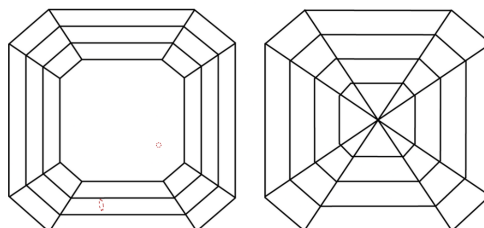
LG629494997  
Report verification at [igi.org](http://igi.org)

## PROPORTIONS



Sample Image Used

## CLARITY CHARACTERISTICS



## KEY TO SYMBOLS

Red symbols indicate internal characteristics.  
Green symbols indicate external characteristics.

## COLOR

D E F G H I J Faint Very Light Light

## CLARITY

IF	VVS <sup>1-2</sup>	VS <sup>1-2</sup>	SI <sup>1-2</sup>	I <sup>1-3</sup>
Internally Flawless	Very Very Slightly Included	Very Slightly Included	Slightly Included	Included



© IGI 2020, International Gemological Institute

FD - 10 20

**www.igi.org**

## DIAMOND REPORT



April 29, 2024

IGI Report Number **LG629494997**Description **LABORATORY GROWN DIAMOND**Shape and Cutting Style **SQUARE EMERALD CUT**

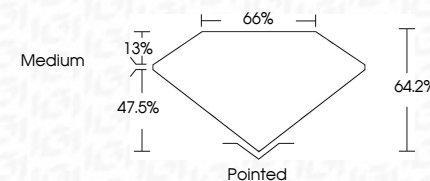
Measurements **6.88 X 6.81 X 4.37 MM**

## GRADING RESULTS

Carat Weight 1.85 CARAT

Color Grade E

Clarity Grade VS 1



### ADDITIONAL GRADING INFORMATION

Polish **EXCELLENT**Symmetry **EXCELLENT**Fluorescence **NONE**Inscription(s)  LG629494997

Comments: This Laboratory Grown Diamond was created by Chemical Vapor Deposition (CVD) growth process and may include post-growth treatment.  
Type IIa



April 29, 2024  
GI Report No LG629494997  
SQUARE EMERALD CUT

	Carat Weight	1.86 CARAT
	Color Grade	E
	Clarity Grade	VS 1
	Depth	64.2%
	Table	66%
Girdle	Medium	
Culet	Pointed	
Polish	EXCELLENT	
Symmetry	EXCELLENT	
Fluorescence	NONE	
Report #	642100000007	

**Comments:**  
This Laboratory Grown Diamond was created by Chemical Vapor Deposition (CVD) growth process and may include post-growth treatment.