



ELECTRONIC COPY

LABORATORY GROWN DIAMOND REPORT

LG629491513

Report verification at igi.org

LABORATORY GROWN DIAMOND REPORT

LABORATORY GROWN DIAMOND REPORT

LABORATORY GROWN DIAMOND REPORT

April 19, 2024
IGI Report Number LG629491513
Description LABORATORY GROWN DIAMOND
Shape and Cutting Style EMERALD CUT
Measurements 11.01 X 7.61 X 5.15 MM

GRADING RESULTS

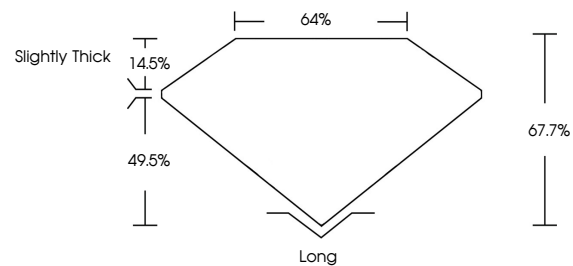
Carat Weight 4.50 CARATS
Color Grade FANCY VIVID BLUE
Clarity Grade VS 1

ADDITIONAL GRADING INFORMATION

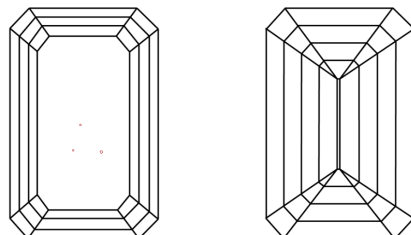
Polish EXCELLENT
Symmetry EXCELLENT
Fluorescence NONE
Inscription(s) IGI LG629491513

Comments: This Laboratory Grown Diamond was created by Chemical Vapor Deposition (CVD) growth process.
Indications of post-growth treatment.

PROPORTIONS



CLARITY CHARACTERISTICS



KEY TO SYMBOLS

Red symbols indicate internal characteristics.
Green symbols indicate external characteristics.

GRADING SCALES

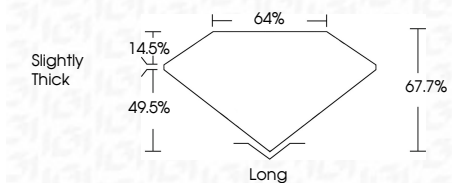
CLARITY

Table mapping clarity grades (IF, VVS, VS, SI, I) to their descriptions (Internally Flawless, Very Very Slightly Included, etc.)

COLOR

Table mapping color grades (D, E, F, G, H, I, J, Faint, Very Light, Light) to their descriptions (Light Tint, Fancy Light, etc.)

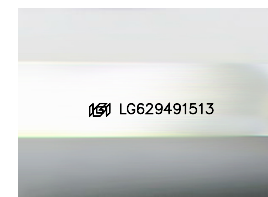
April 19, 2024
IGI Report Number LG629491513
Description LABORATORY GROWN DIAMOND
Shape and Cutting Style EMERALD CUT
Measurements 11.01 X 7.61 X 5.15 MM
GRADING RESULTS
Carat Weight 4.50 CARATS
Color Grade FANCY VIVID BLUE
Clarity Grade VS 1



ADDITIONAL GRADING INFORMATION

Polish EXCELLENT
Symmetry EXCELLENT
Fluorescence NONE
Inscription(s) IGI LG629491513

Comments: This Laboratory Grown Diamond was created by Chemical Vapor Deposition (CVD) growth process.
Indications of post-growth treatment.



Sample Image Used



IGI

April 19, 2024
IGI Report No. LG629491513
EMERALD CUT
4.50 CARATS
FANCY VIVID BLUE
VS 1
67.7%
64%
Slightly Thick
Long
EXCELLENT
EXCELLENT
NONE
IGI LG629491513
Comments: This Laboratory Grown Diamond was created by Chemical Vapor Deposition (CVD) growth process.
Indications of post-growth treatment.