



ELECTRONIC COPY

LABORATORY GROWN DIAMOND REPORT

LG629481653

Report verification at igi.org

LABORATORY GROWN DIAMOND REPORT

LABORATORY GROWN DIAMOND REPORT

LABORATORY GROWN DIAMOND REPORT

April 18, 2024
IGI Report Number LG629481653
Description LABORATORY GROWN DIAMOND
Shape and Cutting Style CUT CORNERED RECTANGULAR MODIFIED BRILLIANT
Measurements 8.83 X 6.28 X 4.42 MM

GRADING RESULTS

Carat Weight 2.34 CARATS
Color Grade FANCY VIVID GREEN
Clarity Grade VS 1

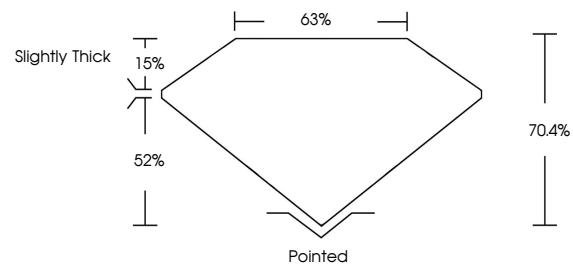
ADDITIONAL GRADING INFORMATION

Polish EXCELLENT
Symmetry VERY GOOD
Fluorescence NONE
Inscription(s) IGI LG629481653

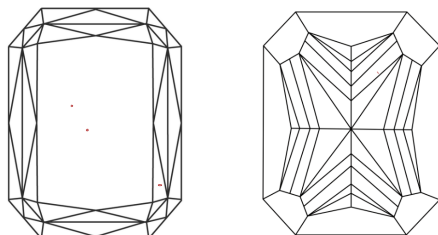
Comments: This Laboratory Grown Diamond was created by Chemical Vapor Deposition (CVD) growth process.
Indications of post-growth treatment.

Secondary color: Blue

PROPORTIONS



CLARITY CHARACTERISTICS



KEY TO SYMBOLS

Red symbols indicate internal characteristics.
Green symbols indicate external characteristics.

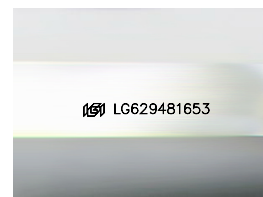
GRADING SCALES

CLARITY

Table mapping clarity grades (IF, VVS, VS, SI, I) to descriptions (Internally Flawless, Very Very Slightly Included, etc.)

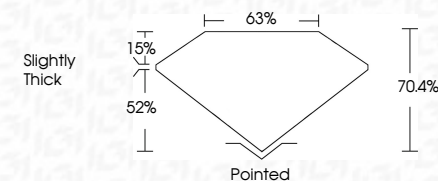
COLOR

Table mapping color grades (D, E, F, G, H, I, J, Faint, Very Light, Light) to descriptions (Light Tint, Fancy Light, etc.)



Sample Image Used

April 18, 2024
IGI Report Number LG629481653
Description LABORATORY GROWN DIAMOND
Shape and Cutting Style CUT CORNERED RECTANGULAR MODIFIED BRILLIANT
Measurements 8.83 X 6.28 X 4.42 MM
GRADING RESULTS
Carat Weight 2.34 CARATS
Color Grade FANCY VIVID GREEN
Clarity Grade VS 1



ADDITIONAL GRADING INFORMATION

Polish EXCELLENT
Symmetry VERY GOOD
Fluorescence NONE
Inscription(s) IGI LG629481653
Comments: This Laboratory Grown Diamond was created by Chemical Vapor Deposition (CVD) growth process.
Indications of post-growth treatment.
Secondary color: Blue

April 18, 2024
IGI Report No LG629481653
CUT CORNERED RECT. MODIFIED BRILLIANT
8.83 X 6.28 X 4.42 MM
2.34 CARATS
FANCY VIVID GREEN
VS 1
70.4%
63%
Slightly Thick
Pointed
EXCELLENT
VERY GOOD
NONE
IGI LG629481653
Comments: This Laboratory Grown Diamond was created by Chemical Vapor Deposition (CVD) growth process.
Indications of post-growth treatment.
Secondary color: Blue

