



**ELECTRONIC COPY**

## LABORATORY GROWN DIAMOND REPORT

|                         |                             |
|-------------------------|-----------------------------|
| April 10, 2024          |                             |
| IGI Report Number       | LG629435319                 |
| Description             | LABORATORY GROWN<br>DIAMOND |
| Shape and Cutting Style | EMERALD CUT                 |
| Measurements            | 7.87 X 5.48 X 3.59 MM       |

## GRADING RESULTS

|               |            |
|---------------|------------|
| Carat Weight  | 1.55 CARAT |
| Color Grade   | D          |
| Clarity Grade | VVS 1      |

### ADDITIONAL GRADING INFORMATION

|                |   |
|----------------|---|
| Polish         | EXCELLENT   |
| Symmetry       | EXCELLENT   |
| Fluorescence   | NONE  |
| Inscription(s) |  LG629435319 |

Comments: As Grown - No indication of post-growth treatment.

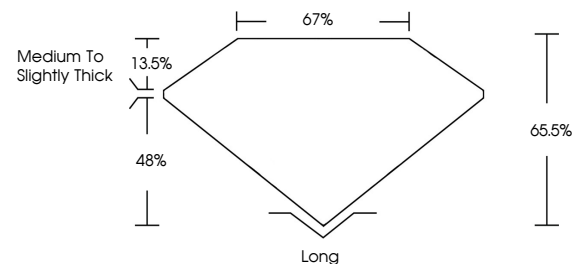
This Laboratory Grown Diamond was created by High Pressure High Temperature (HPHT) growth process.  
Type II

## LABORATORY GROWN DIAMOND REPORT

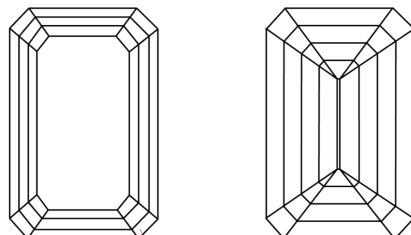
LG629435319

Report verification at [igi.org](http://igi.org)

## PROPORTIONS



## CLARITY CHARACTERISTICS



## KEY TO SYMBOLS

Red symbols indicate internal characteristics.  
Green symbols indicate external characteristics.

LABORATORY GROWN  
DIAMOND REPORT

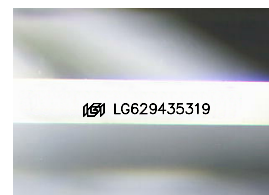
## GRADING SCALES

## CLARITY

| IF                  | VVS <sup>1-2</sup>          | VS <sup>1-2</sup>      | SI <sup>1-2</sup> | I <sup>1-3</sup> |
|---------------------|-----------------------------|------------------------|-------------------|------------------|
| Internally Flawless | Very Very Slightly Included | Very Slightly Included | Slightly Included | Included         |

**COLOR**

D E F G H I J Faint Very Light Light



Sample Image Used



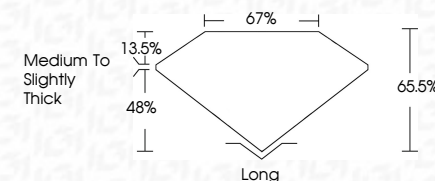
© IGI 2020, International Gemological Institute

FD - 10 20

**www.igi.org**

## LABORATORY GROWN DIAMOND REPORT

|                         |                             |
|-------------------------|-----------------------------|
| April 10, 2024          |                             |
| IGI Report Number       | LG629435319                 |
| Description             | LABORATORY GROWN<br>DIAMOND |
| Shape and Cutting Style | EMERALD CUT                 |
| Measurements            | 7.87 X 5.48 X 3.59 MM       |
| <b>GRADING RESULTS</b>  |                             |
| Carat Weight            | 1.55 CARAT                  |
| Color Grade             | D                           |
| Clarity Grade           | VVS 1                       |



### ADDITIONAL GRADING INFORMATION

|  |   |
|--|---|
| Polish   | EXCELLENT   |
| Symmetry   | EXCELLENT   |
| Fluorescence   | NONE  |
| Inscription(s)   |  LG629435319 |
| Comments: As Grown - No indication of post-growth treatment.                                       |   |
| This Laboratory Grown Diamond was created by High Pressure High Temperature (HPHT) growth process. |   |
| Type II  |   |



IG

April 10, 2024  
 GJ Report No LG629435319

|                              |                                 |
|------------------------------|---------------------------------|
| <b>0.87 X 5.48 X 3.69 MM</b> | <b>1.55 CARAT D</b>             |
| <b>Color Weight</b>          | <b>VVS 1</b>                    |
| <b>Color Grade</b>           | <b>65.5%</b>                    |
| <b>Clarity Grade</b>         | <b>67%</b>                      |
| <b>Depth</b>                 | <b>Medium To Slightly Thick</b> |
| <b>Table</b>                 | <b>Long</b>                     |
| <b>Symmetry</b>              | <b>EXCELLENT</b>                |
| <b>Fluorescence</b>          | <b>EXCELLENT</b>                |
| <b>None</b>                  | <b>NONE</b>                     |
| <b>Carat Weight (g)</b>      | <b>0.87 Carats (0.17 g)</b>     |

**Comments:**  
As Grown - No indication of post-growth treatment.  
This Laboratory Grown Diamond was created by High Pressure High Temperature (HPHT) growth process.