



**ELECTRONIC COPY**

## LABORATORY GROWN DIAMOND REPORT

April 11, 2024	
IGI Report Number	LG629403671
Description	LABORATORY GROWN DIAMOND
Shape and Cutting Style	ROUND BRILLIANT
Measurements	7.99 - 8.02 X 4.89 MM

## GRADING RESULTS

Carat Weight	1.92 CARAT
Color Grade	F
Clarity Grade	VVS 2
Cut Grade	IDEAL

### ADDITIONAL GRADING INFORMATION

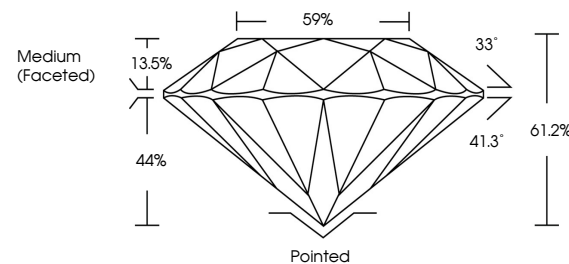
Polish	EXCELLENT
Symmetry	EXCELLENT
Fluorescence	NONE
Inscription(s)	 LG629403671

Comments: This Laboratory Grown Diamond was created by Chemical Vapor Deposition (CVD) growth process and may include post-growth treatment.  
Type IIa

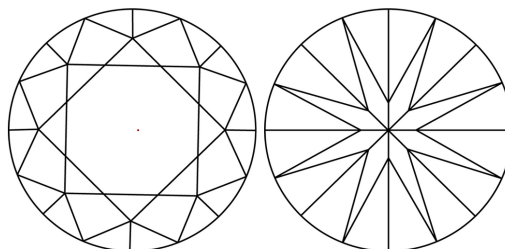
## LABORATORY GROWN DIAMOND REPORT

LG629403671  
Report verification at [igi.org](https://www.igi.org)

## PROPORTIONS



## CLARITY CHARACTERISTICS



### KEY TO SYMBOLS

Red symbols indicate internal characteristics.  
Green symbols indicate external characteristics.

LABORATORY GROWN  
DIAMOND REPORT

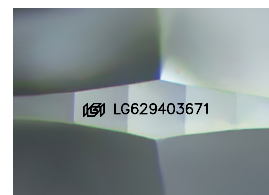
## GRADING SCALES

## CLARITY

IF	VVS <sup>1-2</sup>	VS <sup>1-2</sup>	SI <sup>1-2</sup>	I <sup>1-3</sup>
Internally Flawless	Very Very Slightly Included	Very Slightly Included	Slightly Included	Included

**COLOR**

D E F G H I J Faint Very Light Light



Sample Image Used



© IGI 2020, International Gemological Institute

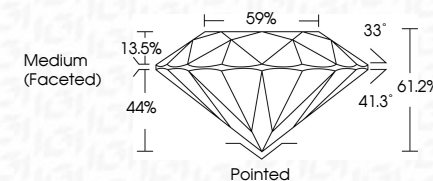
FD - 10 20

**www.igi.org**

## LABORATORY GROWN DIAMOND REPORT

April 11, 2024	
IGI Report Number	LG629403671
Description	LABORATORY GROWN DIAMOND
Shape and Cutting Style	ROUND BRILLIANT
Measurements	7.99 - 8.02 X 4.89 MM

GRADING RESULTS	
Carat Weight	1.92 CARAT
Color Grade	F
Clarity Grade	VVS 2
Cut Grade	IDEAL



### ADDITIONAL GRADING INFORMATION

Polish	EXCELLENT
Symmetry	EXCELLENT
Fluorescence	NONE
Inscription(s)	15 LG 629403671

Comments: This Laboratory Grown Diamond was created by Chemical Vapor Deposition (CVD) growth process and may include post-growth treatment.  
Type IIa



April 11, 2024	G Report No. LG59403671		1.92 CARAT	W5 2	Pointed	Comments: The Laboratory Crown Diamond was a GVD growth process and may include post-growth treatment. type Iia
VS1	Color	Color Grade	W5 2	IDEAL	EXCELLENT	
VS1	Clarity	Clarity Grade	W5 2	61.2%	EXCELLENT	
VS1	Cut	Cut Grade	59%	EXCELLENT	NONE	
VS1	Table	Table Grade	Medium (Faceted)	EXCELLENT	1691 LG59403671	
VS1	Depth	Depth Grade				
VS1	Fluorescence	Fluorescence Grade				
VS1	Inscriptions(s)	Inscriptions(s) Grade				