



**ELECTRONIC COPY**

## LABORATORY GROWN DIAMOND REPORT

April 8, 2024	
IGI Report Number	LG628493537
Description	LABORATORY GROWN DIAMOND
Shape and Cutting Style	PRINCESS CUT
Measurements	6.31 X 6.29 X 4.56 MM

## GRADING RESULTS

Carat Weight	1.58 CARAT
Color Grade	F
Clarity Grade	VVS 2

### ADDITIONAL GRADING INFORMATION

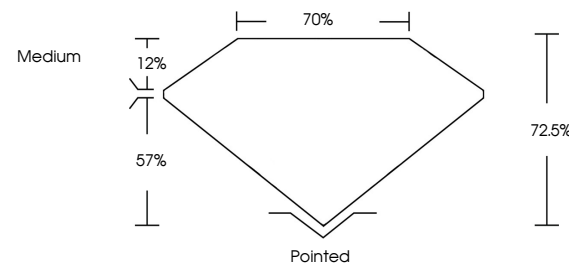
Polish	EXCELLENT
Symmetry	EXCELLENT
Fluorescence	NONE
Inscription(s)	 LG628493537

Comments: This Laboratory Grown Diamond was created by Chemical Vapor Deposition (CVD) growth process and may include post-growth treatment.  
Type IIa

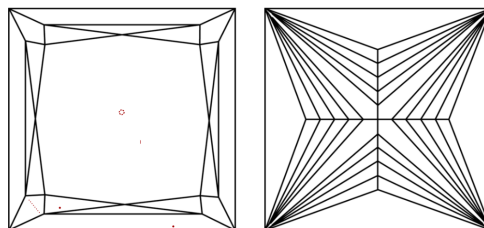
## LABORATORY GROWN DIAMOND REPORT

LG628493537  
Report verification at [igi.org](https://igi.org)

## PROPORTIONS



## CLARITY CHARACTERISTICS



### KEY TO SYMBOLS

Red symbols indicate internal characteristics.  
Green symbols indicate external characteristics.

LABORATORY GROWN  
DIAMOND REPORT

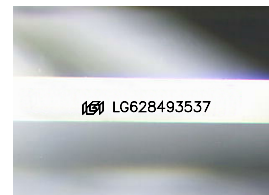
## GRADING SCALES

## CLARITY

IF	VVS <sup>1-2</sup>	VS <sup>1-2</sup>	SI <sup>1-2</sup>	I <sup>1-3</sup>
Internally Flawless	Very Very Slightly Included	Very Slightly Included	Slightly Included	Included

**COLOR**

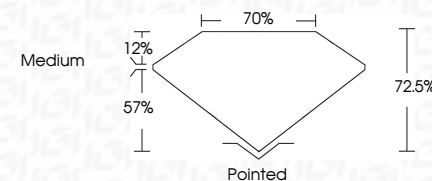
D E F G H I J Faint Very Light Light



Sample Image Used



April 8, 2024	
IGI Report Number	LG628493537
Description	LABORATORY GROWN DIAMOND
Shape and Cutting Style	PRINCESS CUT
Measurements	6.31 X 6.29 X 4.56 MM
<b>GRADING RESULTS</b>	
Carat Weight	1.58 CARAT
Color Grade	F
Clarity Grade	VVS 2



### ADDITIONAL GRADING INFORMATION

Polish	EXCELLENT
Symmetry	EXCELLENT
Fluorescence	NONE
Inscription(s)	 LG628493537

Comments: This Laboratory Grown Diamond was created by Chemical Vapor Deposition (CVD) growth process and may include post-growth treatment.  
Type IIa



© IGI 2020, International Gemological Institute

FD - 10 20



THIS DOCUMENT WAS PRODUCED WITH THE FOLLOWING SECURITY MEASURES: SPECIAL DOCUMENT PAPER, INK SCREENS, WATERMARK, BACKGROUND DESIGNS, HOLOGRAM AND OTHER SECURITY FEATURES NOT LISTED AND DO EXCEED DOCUMENT SECURITY INDUSTRY GUIDELINES

**www.igi.org**

April 8, 2024  
GI Report No LG628493537  
PRINCESS CUT

<b>1.68 CARAT</b>	<b>F</b>	<b>VVS 2</b>	<b>72.6%</b>	<b>70%</b>	<b>Medium</b>	<b>Poined</b>	<b>EXCELLENT</b>	<b>EXCELLENT</b>	<b>NONE</b>	<b>None</b>
-------------------	----------	--------------	--------------	------------	---------------	---------------	------------------	------------------	-------------	-------------

**Comments:**  
This Laboratory Grown Diamond was created by Chemical Vapor Deposition (CVD) growth process and may include post-growth treatment.