



**ELECTRONIC COPY**

LG628483055  
Report verification at igi.org

**LABORATORY GROWN DIAMOND REPORT**

April 2, 2024  
IGI Report Number **LG628483055**

Description **LABORATORY GROWN  
DIAMOND**

Shape and Cutting Style **CUSHION BRILLIANT**

Measurements **7.44 X 5.33 X 3.71 MM**

**GRADING RESULTS**

Carat Weight **1.08 CARAT**

Color Grade **E**

Clarity Grade **VS 1**

**ADDITIONAL GRADING INFORMATION**

Polish **EXCELLENT**

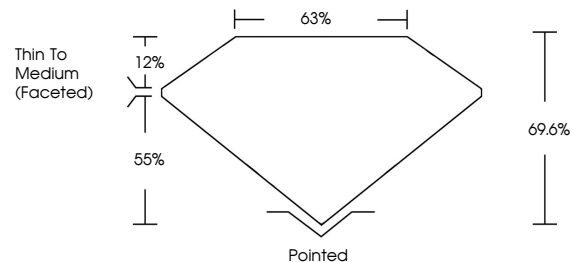
Symmetry **EXCELLENT**

Fluorescence **NONE**

Inscription(s) **IGI LG628483055**

Comments: This Laboratory Grown Diamond was created by Chemical Vapor Deposition (CVD) growth process and may include post-growth treatment. Type IIa

**PROPORTIONS**



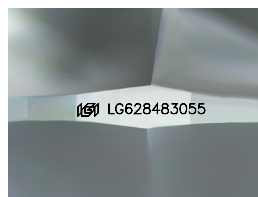
**GRADING SCALES**

**CLARITY**

IF	VVS <sup>1-2</sup>	VS <sup>1-2</sup>	SI <sup>1-2</sup>	I <sup>1-3</sup>
Internally Flawless	Very Very Slightly Included	Very Slightly Included	Slightly Included	Included

**COLOR**

D	E	F	G	H	I	J	Faint	Very Light	Light
---	---	---	---	---	---	---	-------	------------	-------



Sample Image Used

April 2, 2024  
IGI Report Number **LG628483055**  
Description **LABORATORY GROWN  
DIAMOND**

Shape and Cutting Style **CUSHION BRILLIANT**

Measurements **7.44 X 5.33 X 3.71 MM**

**GRADING RESULTS**

Carat Weight **1.08 CARAT**

Color Grade **E**

Clarity Grade **VS 1**

**ADDITIONAL GRADING INFORMATION**

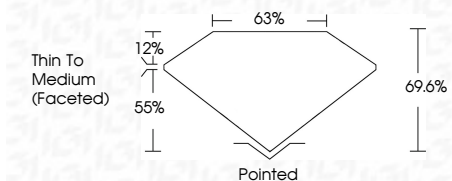
Polish **EXCELLENT**

Symmetry **EXCELLENT**

Fluorescence **NONE**

Inscription(s) **IGI LG628483055**

Comments: This Laboratory Grown Diamond was created by Chemical Vapor Deposition (CVD) growth process and may include post-growth treatment. Type IIa



**IGI**

April 2, 2024  
IGI Report No LG628483055  
**CUSHION BRILLIANT**  
7.44 X 5.33 X 3.71 MM  
1.08 CARAT  
E  
Color Grade  
VS 1  
Clarity Grade  
69.6%  
55%  
Thin To Medium (Faceted)  
Pointed  
EXCELLENT  
EXCELLENT  
NONE  
IGI LG628483055

Comments: This Laboratory Grown Diamond was created by Chemical Vapor Deposition (CVD) growth process and may include post-growth treatment. Type IIa