



**ELECTRONIC COPY**

**LABORATORY GROWN DIAMOND REPORT**

LG628477651

Report verification at igi.org

**LABORATORY GROWN  
DIAMOND REPORT**

**LABORATORY GROWN DIAMOND REPORT**

**LABORATORY GROWN DIAMOND REPORT**

April 12, 2024  
 IGI Report Number **LG628477651**  
 Description **LABORATORY GROWN  
DIAMOND**  
 Shape and Cutting Style **CUSHION BRILLIANT**  
 Measurements **13.29 X 11.46 X 7.71 MM**

**GRADING RESULTS**

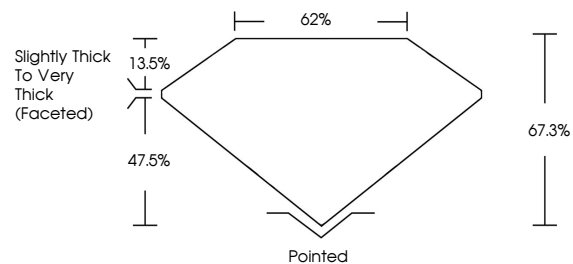
Carat Weight **11.07 CARATS**  
 Color Grade **FANCY VIVID BROWNISH  
YELLOW**  
 Clarity Grade **VS 2**

**ADDITIONAL GRADING INFORMATION**

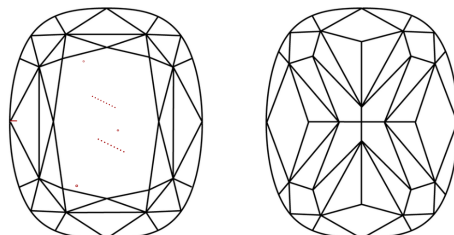
Polish **EXCELLENT**  
 Symmetry **EXCELLENT**  
 Fluorescence **NONE**  
 Inscription(s) **IGI LG628477651**

Comments: This Laboratory Grown Diamond was created by Chemical Vapor Deposition (CVD) growth process and may include post-growth treatment.

**PROPORTIONS**



**CLARITY CHARACTERISTICS**



**KEY TO SYMBOLS**

Red symbols indicate internal characteristics.  
 Green symbols indicate external characteristics.

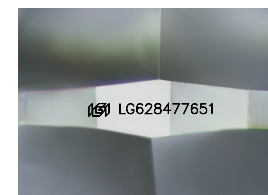
**GRADING SCALES**

**CLARITY**

| IF                  | VVS <sup>1-2</sup>          | VS <sup>1-2</sup>      | SI <sup>1-2</sup> | I <sup>1-3</sup> |
|---------------------|-----------------------------|------------------------|-------------------|------------------|
| Internally Flawless | Very Very Slightly Included | Very Slightly Included | Slightly Included | Included         |

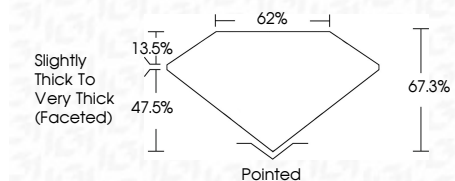
**COLOR**

| D          | E           | F     | G             | H           | I | J | Faint | Very Light | Light |
|------------|-------------|-------|---------------|-------------|---|---|-------|------------|-------|
| Light Tint | Fancy Light | Fancy | Fancy Intense | Fancy Vivid |   |   |       |            |       |



Sample Image Used

April 12, 2024  
 IGI Report Number **LG628477651**  
 Description **LABORATORY GROWN  
DIAMOND**  
 Shape and Cutting Style **CUSHION BRILLIANT**  
 Measurements **13.29 X 11.46 X 7.71 MM**  
**GRADING RESULTS**  
 Carat Weight **11.07 CARATS**  
 Color Grade **FANCY VIVID BROWNISH  
YELLOW**  
 Clarity Grade **VS 2**



**ADDITIONAL GRADING INFORMATION**

Polish **EXCELLENT**  
 Symmetry **EXCELLENT**  
 Fluorescence **NONE**  
 Inscription(s) **IGI LG628477651**  
 Comments: This Laboratory Grown Diamond was created by Chemical Vapor Deposition (CVD) growth process and may include post-growth treatment.



**IGI**

April 12, 2024  
 IGI Report No LG628477651  
**CUSHION BRILLIANT**  
 13.29 X 11.46 X 7.71 MM  
 Carat Weight **11.07 CARATS**  
 Color Grade **FANCY VIVID BROWNISH YELLOW**  
 Clarity Grade **VS 2**  
 Depth **67.0%**  
 Table **62%**  
 Girdle **Slightly Thick To Very Thick (Faceted)**  
 Culet **Pointed**  
 Polish **EXCELLENT**  
 Symmetry **EXCELLENT**  
 Fluorescence **NONE**  
 Inscription(s) **IGI LG628477651**

Comments: This Laboratory Grown Diamond was created by Chemical Vapor Deposition (CVD) growth process and may include post-growth treatment.