



ELECTRONIC COPY

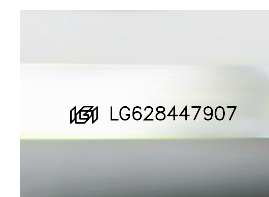
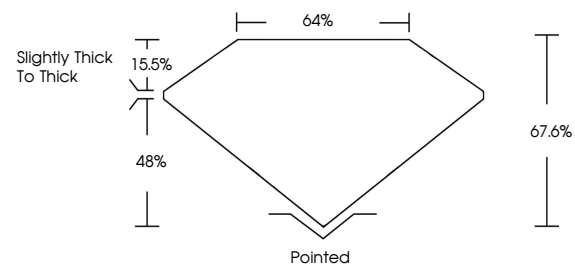
LG628447907
Report verification at igi.org



February 18, 2026
IGI Report Number **LG628447907**
Description **LABORATORY GROWN DIAMOND**
Shape and Cutting Style **PRINCESS CUT**
Measurements **7.18 X 7.07 X 4.78 MM**
GRADING RESULTS
Carat Weight **2.23 CARATS**
Color Grade **D**
Clarity Grade **INTERNALLY FLAWLESS**

February 18, 2026
IGI Report Number **LG628447907**
Description **LABORATORY GROWN DIAMOND**
Shape and Cutting Style **PRINCESS CUT**
Measurements **7.18 X 7.07 X 4.78 MM**

PROPORTIONS

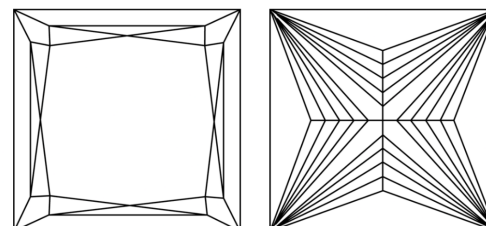


Sample Image Used

GRADING RESULTS

Carat Weight **2.23 CARATS**
Color Grade **D**
Clarity Grade **INTERNALLY FLAWLESS**

CLARITY CHARACTERISTICS



KEY TO SYMBOLS

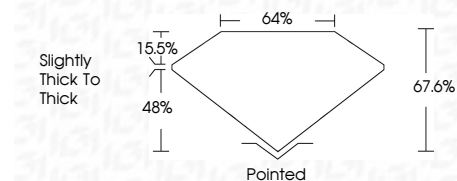
Red symbols indicate internal characteristics.
Green symbols indicate external characteristics.

COLOR

D E F G H I J Faint Very Light Light

CLARITY

FL	IF	VS ¹⁻²	VS ¹⁻²	SI ¹⁻²	I ¹⁻³
Flawless	Internally Flawless	Very Very Slightly Included	Very Slightly Included	Slightly Included	Included



ADDITIONAL GRADING INFORMATION

Polish **EXCELLENT**
Symmetry **EXCELLENT**
Fluorescence **NONE**
Inscription(s) **IGI LG628447907**
Comments: As Grown - No indication of post-growth treatment.
This Laboratory Grown Diamond was created by High Pressure High Temperature (HPHT) growth process.
Type II

ADDITIONAL GRADING INFORMATION

Polish **EXCELLENT**
Symmetry **EXCELLENT**
Fluorescence **NONE**
Inscription(s) **IGI LG628447907**

Comments: As Grown - No indication of post-growth treatment.
This Laboratory Grown Diamond was created by High Pressure High Temperature (HPHT) growth process.
Type II



February 18, 2026
IGI Report No. LG628447907
PRINCESS CUT
7.18 X 7.07 X 4.78 MM
2.23 CARATS
D
LF
67.6%
64%
Slightly thick to thick
Pointed
EXCELLENT
EXCELLENT
NONE
IGI LG628447907
Comments: As Grown - No indication of post-growth treatment.
This Laboratory Grown Diamond was created by High Pressure High Temperature (HPHT) growth process.
Type II