



**ELECTRONIC COPY**

## LABORATORY GROWN DIAMOND REPORT

|                         |                             |
|-------------------------|-----------------------------|
| April 3, 2024           |                             |
| IGI Report Number       | LG628439668                 |
| Description             | LABORATORY GROWN<br>DIAMOND |
| Shape and Cutting Style | ROUND BRILLIANT             |
| Measurements            | 10.00 - 10.05 X 6.03 MM     |

## GRADING RESULTS

|               |             |
|---------------|-------------|
| Carat Weight  | 3.68 CARATS |
| Color Grade   | H           |
| Clarity Grade | VS 1        |
| Cut Grade     | IDEAL       |

### ADDITIONAL GRADING INFORMATION

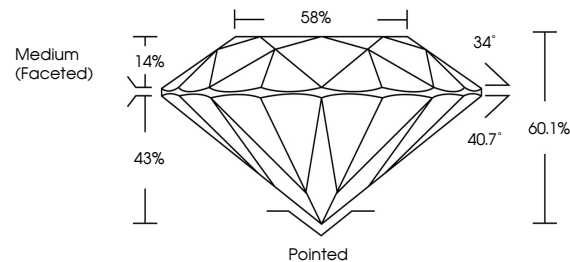
|                |   |
|----------------|---|
| Polish         | EXCELLENT   |
| Symmetry       | EXCELLENT   |
| Fluorescence   | NONE  |
| Inscription(s) |  LG628439668 |

Comments: This Laboratory Grown Diamond was created by Chemical Vapor Deposition (CVD) growth process and may include post-growth treatment.  
Type IIa

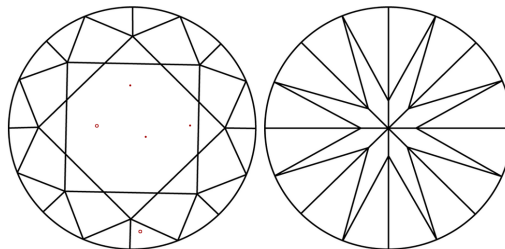
## LABORATORY GROWN DIAMOND REPORT

LG628439668  
Report verification at [igi.org](https://igi.org)

## PROPORTIONS



## CLARITY CHARACTERISTICS



### KEY TO SYMBOLS

Red symbols indicate internal characteristics.  
Green symbols indicate external characteristics.

LABORATORY GROWN  
DIAMOND REPORT

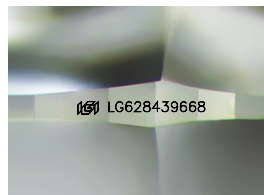
## GRADING SCALES

## CLARITY

| IF                  | VVS <sup>1-2</sup>          | VS <sup>1-2</sup>      | SI <sup>1-2</sup> | I <sup>1-3</sup> |
|---------------------|-----------------------------|------------------------|-------------------|------------------|
| Internally Flawless | Very Very Slightly Included | Very Slightly Included | Slightly Included | Included         |

**COLOR**

D E F G H I J Faint Very Light Light



Sample Image Used



© IGI 2020, International Gemological Institute

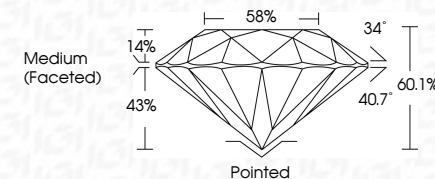
FD - 10 20

## LABORATORY GROWN DIAMOND REPORT

|                         |                             |
|-------------------------|-----------------------------|
| April 3, 2024           |                             |
| IGI Report Number       | LG628439668                 |
| Description             | LABORATORY GROWN<br>DIAMOND |
| Shape and Cutting Style | ROUND BRILLIANT             |
| Measurements            | 10.00 - 10.05 X 6.03 MM     |

## GRADING RESULTS

|               |             |
|---------------|-------------|
| Carat Weight  | 3.68 CARATS |
| Color Grade   | H           |
| Clarity Grade | VS 1        |
| Cut Grade     | IDEAL       |



### ADDITIONAL GRADING INFORMATION

|                |   |
|----------------|---|
| Polish         | EXCELLENT   |
| Symmetry       | EXCELLENT   |
| Fluorescence   | NONE  |
| Inscription(s) |  LG628439668 |

Comments: This Laboratory Grown Diamond was created by Chemical Vapor Deposition (CVD) growth process and may include post-growth treatment.  
Type IIa



|   |                        |
|---|------------------------|
| April 3, 2024   | GI report No LG2849568 |
| ROUND BRILLIANT   |                        |
| 10.00 - 10.05 x 6.03 MM   | 3.68 CARATS            |
| Color: Weight   | H                      |
| Color Grade   | Vs 1                   |
| Clarity Grade   | IDEAL                  |
| Cut Grade   | 60.1%                  |
| Depth   | 59%                    |
| Table   | Medium (Faceted)       |
| Girdle  |                        |
| Quiet   | Partied                |
| Polish  | EXCELLENT              |
| Symmetry  | EXCELLENT              |
| Fluorescence  | NONE                   |
| Inscription(s)  | 49 LG2849568           |
| Comments:   |                        |
| <p>Reported by Crown Diamond was created by Chemical Vapor Deposition (CVD) growth process and may include post-growth treatment.</p> |                        |
| Type IIa  |                        |

**www.igi.org**