



**ELECTRONIC COPY**

## LABORATORY GROWN DIAMOND REPORT

April 8, 2024	
IGI Report Number	LG628425710
Description	LABORATORY GROWN DIAMOND
Shape and Cutting Style	HEXAGONAL STEP CUT
Measurements	7.74 X 6.71 X 3.95 MM

## GRADING RESULTS

Carat Weight	1.50 CARAT
Color Grade	G
Clarity Grade	VS 1

### ADDITIONAL GRADING INFORMATION

Polish	EXCELLENT
Symmetry	EXCELLENT
Fluorescence	NONE
Inscription(s)	 LG628425710

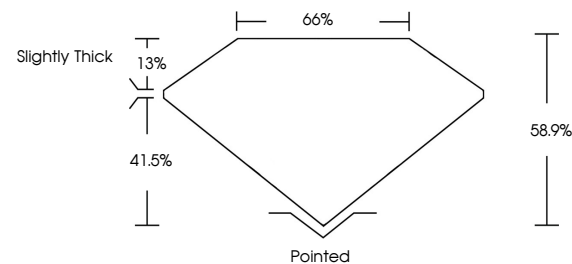
Comments: This Laboratory Grown Diamond was created by Chemical Vapor Deposition (CVD) growth process and may include post-growth treatment.  
Type IIa

## LABORATORY GROWN DIAMOND REPORT

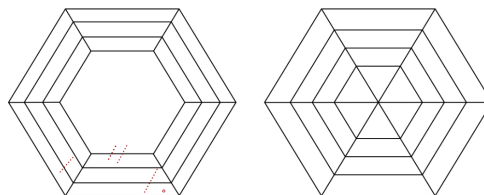
LG628425710

Report verification at [igi.org](http://igi.org)

## PROPORTIONS



## CLARITY CHARACTERISTICS



### KEY TO SYMBOLS

Red symbols indicate internal characteristics.  
Green symbols indicate external characteristics.

LABORATORY GROWN  
DIAMOND REPORT

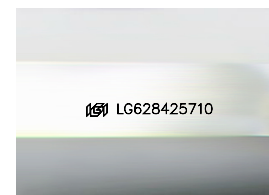
## GRADING SCALES

## CLARITY

IF	VVS <sup>1-2</sup>	VS <sup>1-2</sup>	SI <sup>1-2</sup>	I <sup>1-3</sup>
Internally Flawless	Very Very Slightly Included	Very Slightly Included	Slightly Included	Included

**COLOR**

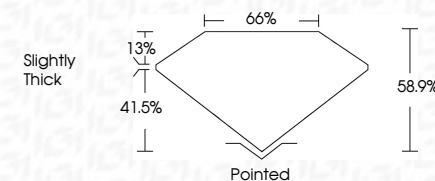
D E F G H I J Faint Very Light Light



Sample Image Used



April 8, 2024	
IGI Report Number	LG628425710
Description	LABORATORY GROWN DIAMOND
Shape and Cutting Style	HEXAGONAL STEP CUT
Measurements	7.74 X 6.71 X 3.95 MM
<b>GRADING RESULTS</b>	
Carat Weight	1.50 CARAT
Color Grade	G
Clarity Grade	VS 1



### ADDITIONAL GRADING INFORMATION

Polish	EXCELLENT
Symmetry	EXCELLENT
Fluorescence	NONE
Inscription(s)	(16) LG628425710

Comments: This Laboratory Grown Diamond was created by Chemical Vapor Deposition (CVD) growth process and may include post-growth treatment.  
Type IIa



© IGI 2020, International Gemological Institute

FD - 10 20



THIS DOCUMENT WAS PRODUCED WITH THE FOLLOWING SECURITY MEASURES: SPECIAL DOCUMENT PAPER, INK SCREENS, WATERMARK, BACKGROUND DESIGNS, HOLOGRAM AND OTHER SECURITY FEATURES NOT LISTED AND DO EXCEED DOCUMENT SECURITY INDUSTRY GUIDELINE

**www.igi.org**

April 8, 2024  
GI Report No LG628425710  
HEXAGONAL STEEL C/IT

7.74 X 6.71 X 3.95 MM	1.50 CARAT
Carat Weight	G
Color Grade	VS 1
Clarity Grade	68.9%
Depth	64%
Table	Slightly Thick
Grade	Pointed
Culet	EXCELLENT
Polish	EXCELLENT
Symmetry	EXCELLENT
Fluorescence	NONE

**Comments:**  
This Laboratory Grown Diamond was created by Chemical Vapor Deposition (CVD) growth process and may include post-growth treatment.