



ELECTRONIC COPY

LABORATORY GROWN DIAMOND REPORT

April 9, 2024	
IGI Report Number	LG628425599
Description	LABORATORY GROWN DIAMOND
Shape and Cutting Style	ROUND BRILLIANT
Measurements	8.00 - 8.06 X 4.90 MM

GRADING RESULTS

Carat Weight	1.94 CARAT
Color Grade	E
Clarity Grade	VS 1
Cut Grade	IDEAL

ADDITIONAL GRADING INFORMATION

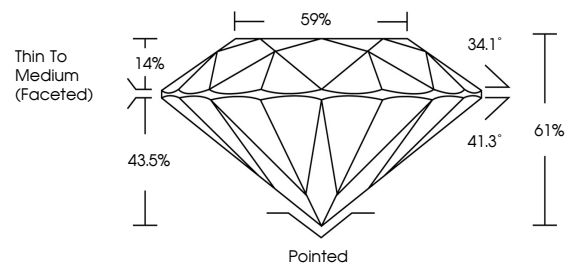
Polish	EXCELLENT
Symmetry	EXCELLENT
Fluorescence	NONE
Inscription(s)	131 LG628425599

Comments: This Laboratory Grown Diamond was created by Chemical Vapor Deposition (CVD) growth process and may include post-growth treatment.
Type IIa

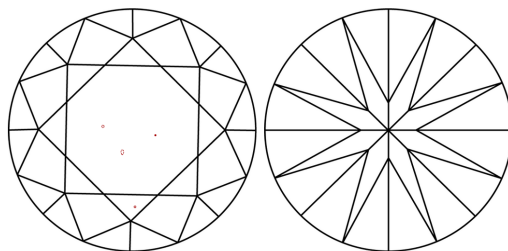
LABORATORY GROWN DIAMOND REPORT

LG628425599
Report verification at igi.org

PROPORTIONS



CLARITY CHARACTERISTICS



KEY TO SYMBOLS

Red symbols indicate internal characteristics.
Green symbols indicate external characteristics.

LABORATORY GROWN
DIAMOND REPORT

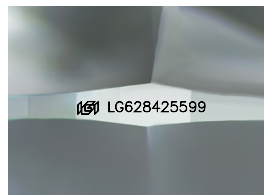
GRADING SCALES

CLARITY

IF	VVS ¹⁻²	VS ¹⁻²	SI ¹⁻²	I ¹⁻³
Internally Flawless	Very Very Slightly Included	Very Slightly Included	Slightly Included	Included

COLOR

D E F G H I J Faint Very Light Light



Sample Image Used



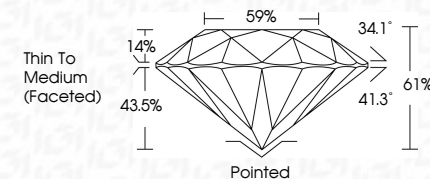
© IGI 2020, International Gemological Institute

FD - 10 20

LABORATORY GROWN DIAMOND REPORT

April 9, 2024	
IGI Report Number	LG628425599
Description	LABORATORY GROWN DIAMOND
Shape and Cutting Style	ROUND BRILLIANT
Measurements	8.00 - 8.06 X 4.90 MM

GRADING RESULTS	
Carat Weight	1.94 CARAT
Color Grade	E
Clarity Grade	VS 1
Cut Grade	IDEAL



ADDITIONAL GRADING INFORMATION

Polish	EXCELLENT
Symmetry	EXCELLENT
Fluorescence	NONE
Inscription(s)	 LG628425599

Comments: This Laboratory Grown Diamond was created by Chemical Vapor Deposition (CVD) growth process and may include post-growth treatment.
Type IIa



IG

April 9, 2024	IGI Report No LG528425599		1.04 CARAT		E	
ROUND BRILLIANT	6.00 x 8.05 x 4.90 MM			Vs1	IDEAL	61%
	Color Grade	Clarity Grade	Cut Grade	Depth	Table	65%
				Circle	Circle	
					Thin to Medium (Faceted)	
				Culet	Pointed	
				Polish	EXCELLENT	
				Symmetry	EXCELLENT	
				Fluorescence	NONE	
				Inscription(s)	1691 LG528425599	
<p>Comments: Chemically Grown Diamond was created by Chemical Vapor Deposition (CVD) growth process and may include post-growth treatment.</p> <p>Type IIC</p>						