



LABORATORY GROWN DIAMOND REPORT

ADDITIONAL GRADING INFORMATION

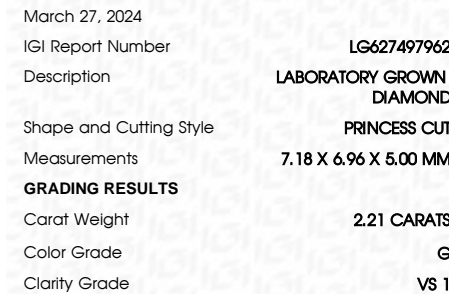
Comments: This Laboratory Grown Diamond was created by Chemical Vapor Deposition (CVD) growth process and may include post-growth treatment.
Type IIa

LG627497962
Report verification at igi.org



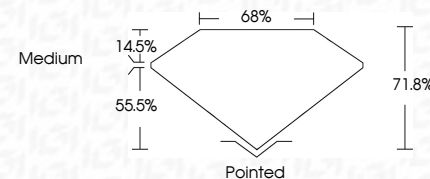
IF	VVS ¹⁻²	VS ¹⁻²	SI ¹⁻²	I ¹⁻³
Internally Flawless	Very Very Slightly Included	Very Slightly Included	Slightly Included	Included

D E F G H I J Faint Very Light Light



Polish	EXCELLENT
Symmetry	EXCELLENT
Fluorescence	NONE
Inscription(s)	15 LG-627497962

Comments: This Laboratory Grown Diamond was created by Chemical Vapor Deposition (CVD) growth process and may include post-growth treatment.
Type IIa



FD - 10 20

www.igi.org

THIS DOCUMENT WAS PRODUCED WITH THE FOLLOWING SECURITY MEASURES: SPECIAL DOCUMENT PAPER, INK SCREENS, WATERMARK, BACKGROUND DESIGNS, HOLOGRAM AND OTHER SECURITY FEATURES NOT LISTED AND DO EXCEED DOCUMENT SECURITY INDUSTRY GUIDELINES

March 27, 2024
 IGI Report No LG627497962
 PRINCESS CITT

7.18 X 6.96 X 5.00 MM	2.21 CARATS
Color Weight	VS 1
Color Grade	71.8%
Clarity Grade	68%
Depth	Medium
Table	Pointed
Grade	EXCELLENT
Culet	EXCELLENT
Polish	NONE
Symmetry	NONE
Fluorescence	
Measurements (mm)	4mm 1.5mm 0.7mm 0.2mm

Comments:
This Laboratory Grown Diamond was created by Chemical Vapor Deposition (CVD) growth process and may include post-growth treatment.