



**ELECTRONIC COPY**

**LABORATORY GROWN DIAMOND REPORT**

LG627481515

Report verification at igi.org

**LABORATORY GROWN  
DIAMOND REPORT**

**LABORATORY GROWN DIAMOND REPORT**

**LABORATORY GROWN DIAMOND REPORT**

March 27, 2024  
 IGI Report Number **LG627481515**  
 Description **LABORATORY GROWN  
DIAMOND**  
 Shape and Cutting Style **HEXAGONAL STEP CUT**  
 Measurements **6.95 X 6.30 X 3.67 MM**

**GRADING RESULTS**

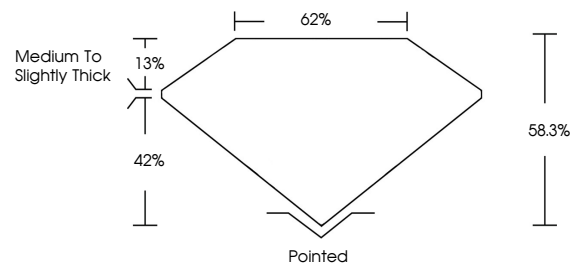
Carat Weight **1.15 CARAT**  
 Color Grade **F**  
 Clarity Grade **VVS 1**

**ADDITIONAL GRADING INFORMATION**

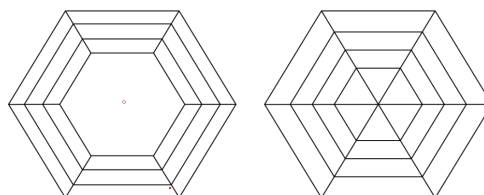
Polish **EXCELLENT**  
 Symmetry **EXCELLENT**  
 Fluorescence **NONE**  
 Inscription(s) **IGI LG627481515**

Comments: This Laboratory Grown Diamond was created by Chemical Vapor Deposition (CVD) growth process and may include post-growth treatment. Type IIa

**PROPORTIONS**



**CLARITY CHARACTERISTICS**



**KEY TO SYMBOLS**

Red symbols indicate internal characteristics.  
 Green symbols indicate external characteristics.

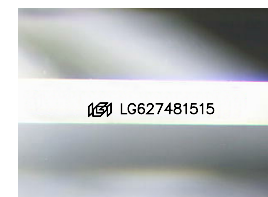
**GRADING SCALES**

**CLARITY**

IF	VVS <sup>1-2</sup>	VS <sup>1-2</sup>	SI <sup>1-2</sup>	I <sup>1-3</sup>
Internally Flawless	Very Very Slightly Included	Very Slightly Included	Slightly Included	Included

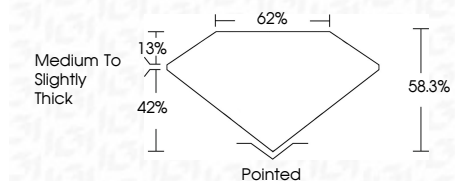
**COLOR**

D	E	F	G	H	I	J	Faint	Very Light	Light
---	---	---	---	---	---	---	-------	------------	-------



Sample Image Used

March 27, 2024  
 IGI Report Number **LG627481515**  
 Description **LABORATORY GROWN  
DIAMOND**  
 Shape and Cutting Style **HEXAGONAL STEP CUT**  
 Measurements **6.95 X 6.30 X 3.67 MM**  
**GRADING RESULTS**  
 Carat Weight **1.15 CARAT**  
 Color Grade **F**  
 Clarity Grade **VVS 1**



**ADDITIONAL GRADING INFORMATION**

Polish **EXCELLENT**  
 Symmetry **EXCELLENT**  
 Fluorescence **NONE**  
 Inscription(s) **IGI LG627481515**  
 Comments: This Laboratory Grown Diamond was created by Chemical Vapor Deposition (CVD) growth process and may include post-growth treatment. Type IIa



**IGI**

March 27, 2024  
 IGI Report No LG627481515  
**HEXAGONAL STEP CUT**  
 6.95 X 6.30 X 3.67 MM  
 Carat Weight **1.15 CARAT**  
 Color Grade **F**  
 Clarity Grade **VVS 1**  
 Depth **58.3%**  
 Table **62%**  
 Girdle **Medium to Slightly Thick**  
 Culet **Pointed**  
 Polish **EXCELLENT**  
 Symmetry **EXCELLENT**  
 Fluorescence **NONE**  
 Inscription(s) **IGI LG627481515**

Comments: This Laboratory Grown Diamond was created by Chemical Vapor Deposition (CVD) growth process and may include post-growth treatment. Type IIa

