



ELECTRONIC COPY

LABORATORY GROWN DIAMOND REPORT

Description	LABORATORY GROWN DIAMOND
Shape and Cutting Style	OVAL MODIFIED BRILLIANT
Measurements	9.17 X 6.65 X 4.67 MM

GRADING RESULTS

Carat Weight	2.26 CARATS
Color Grade	FANCY INTENSE YELLOW
Clarity Grade	VS 1

ADDITIONAL GRADING INFORMATION

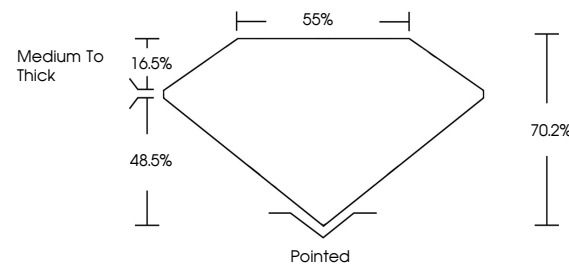
Polish	EXCELLENT
Symmetry	EXCELLENT
Fluorescence	NONE
Inscription(s)	 LG627478141

Comments: This Laboratory Grown Diamond was created by Chemical Vapor Deposition (CVD) growth process and may include post-growth treatment.

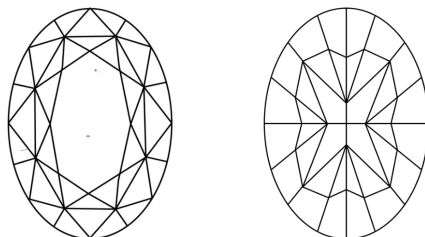
LABORATORY GROWN DIAMOND REPORT

LG627478141
Report verification at igi.org

PROPORTIONS



CLARITY CHARACTERISTICS



KEY TO SYMBOLS

Red symbols indicate internal characteristics.
Green symbols indicate external characteristics.

LABORATORY GROWN
DIAMOND REPORT

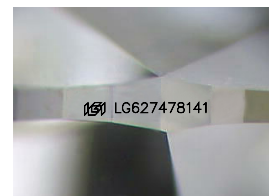
GRADING SCALES

CLARITY

IF	VVS ¹⁻²	VS ¹⁻²	SI ¹⁻²	I ¹⁻³
Internally Flawless	Very Very Slightly Included	Very Slightly Included	Slightly Included	Included

COLOR

D	E	F	G	H	I	J	Faint	Very Light	Light
Light Tint			Fancy Light			Fancy	Fancy Intense		Fancy Vivid



Sample Image Used



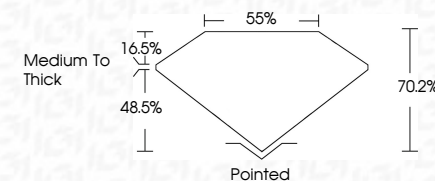
© IGI 2020, International Gemological Institute

FD - 10 20

www.igi.org

LABORATORY GROWN DIAMOND REPORT

April 6, 2024	
IGI Report Number	LG627478141
Description	LABORATORY GROWN DIAMOND
Shape and Cutting Style	OVAL MODIFIED BRILLIANT
Measurements	9.17 X 6.65 X 4.67 MM
GRADING RESULTS	
Carat Weight	2.26 CARATS
Color Grade	FANCY INTENSE YELLOW
Clarity Grade	VS 1



ADDITIONAL GRADING INFORMATION

Polish	EXCELLENT
Symmetry	EXCELLENT
Fluorescence	NONE
Inscription(s)	103 LG 627478141

Comments: This Laboratory Grown Diamond was created by Chemical Vapor Deposition (CVD) growth process and may include post-growth treatment.



April 6, 2024	2.26 CARATS	Polished
GI Report No LG2478141	FANCY INTENSE YELLOW	EXCELLENT
UNMODIFIED BRILLIANT		EXCELLENT
17.17 x 4.65 x 4.67 MM	VS 1	NONE
Color Weight	70.2%	1891 LG2478141
Carat Weight	70.2%	
Depth	55%	
Table		
Clarity Grade	Medium to thick	
Color		
Symmetry		
Fluorescence		
Inscriptions(s)		
Comments:		
The Laboratory Grown Diamond was created by Chemical Vapor Deposition (CVD) growth process and may include post-growth treatment.		