



ELECTRONIC COPY

LG627473476

Report verification at igi.org

LABORATORY GROWN DIAMOND REPORT

April 12, 2024
 IGI Report Number **LG627473476**
 Description **LABORATORY GROWN
DIAMOND**
 Shape and Cutting Style **ROUND BRILLIANT**
 Measurements **8.12 - 8.15 X 5.06 MM**

GRADING RESULTS

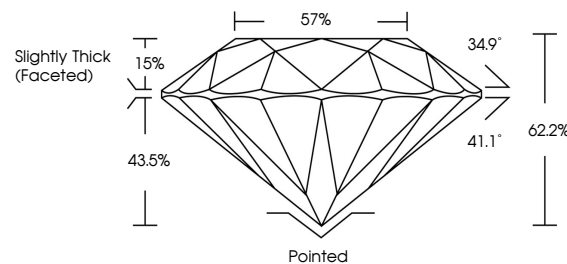
Carat Weight **2.06 CARATS**
 Color Grade **FANCY BLUE**
 Clarity Grade **VS 1**
 Cut Grade **IDEAL**

ADDITIONAL GRADING INFORMATION

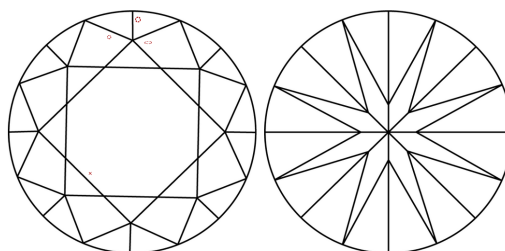
Polish **EXCELLENT**
 Symmetry **EXCELLENT**
 Fluorescence **NONE**
 Inscription(s) **LG627473476**

Comments: This Laboratory Grown Diamond was created by Chemical Vapor Deposition (CVD) growth process.
 Indications of post-growth treatment.

PROPORTIONS



CLARITY CHARACTERISTICS



KEY TO SYMBOLS

Red symbols indicate internal characteristics.
 Green symbols indicate external characteristics.

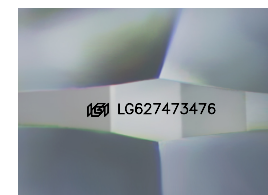
GRADING SCALES

CLARITY

IF	VVS ¹⁻²	VS ¹⁻²	SI ¹⁻²	I ¹⁻³
Internally Flawless	Very Very Slightly Included	Very Slightly Included	Slightly Included	Included

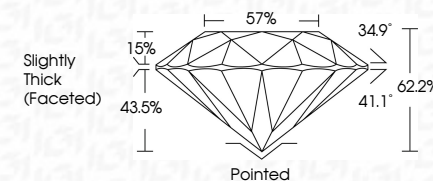
COLOR

D	E	F	G	H	I	J	Faint	Very Light	Light
Light Tint	Fancy Light	Fancy	Fancy Intense	Fancy Vivid					



Sample Image Used

April 12, 2024
 IGI Report Number **LG627473476**
 Description **LABORATORY GROWN
DIAMOND**
 Shape and Cutting Style **ROUND BRILLIANT**
 Measurements **8.12 - 8.15 X 5.06 MM**
GRADING RESULTS
 Carat Weight **2.06 CARATS**
 Color Grade **FANCY BLUE**
 Clarity Grade **VS 1**
 Cut Grade **IDEAL**



ADDITIONAL GRADING INFORMATION

Polish **EXCELLENT**
 Symmetry **EXCELLENT**
 Fluorescence **NONE**
 Inscription(s) **LG627473476**
 Comments: This Laboratory Grown Diamond was created by Chemical Vapor Deposition (CVD) growth process.
 Indications of post-growth treatment.



IGI

April 12, 2024	IGI Report No LG627473476	2.06 CARATS	FANCY BLUE	VS 1	IDEAL	57%	Slightly Thick (Faceted)	Pointed	EXCELLENT	EXCELLENT	NONE	LG627473476
ROUND BRILLIANT	8.12 - 8.15 X 5.06 MM	Carat Weight	Color Grade	Clarity Grade	Cut Grade	Depth	Table	Girdle	Polish	Symmetry	Fluorescence	Inscription(s)

Comments: This Laboratory Grown Diamond was created by Chemical Vapor Deposition (CVD) growth process.
 Indications of post-growth treatment.