



ELECTRONIC COPY

LABORATORY GROWN DIAMOND REPORT

| | |
|-------------------------|-----------------------------|
| March 30, 2024 | |
| IGI Report Number | LG627458161 |
| Description | LABORATORY GROWN DIAMOND |
| Shape and Cutting Style | ROUND BRILLIANT |
| Measurements | 8.21 - 8.27 X 4.95 MM |

GRADING RESULTS

| | |
|---------------|------------------|
| Carat Weight | 2.02 CARATS |
| Color Grade | FANCY VIVID BLUE |
| Clarity Grade | VS 1 |
| Cut Grade | IDEAL |

ADDITIONAL GRADING INFORMATION

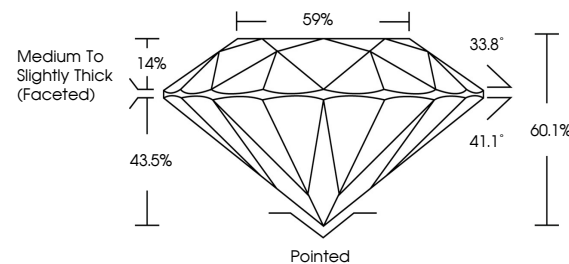
| | |
|----------------|---|
| Polish | EXCELLENT |
| Symmetry | EXCELLENT |
| Fluorescence | NONE |
| Inscription(s) |  LG627458161 |

Comments: This Laboratory Grown Diamond was created by Chemical Vapor Deposition (CVD) growth process.
Indications of post-growth treatment.

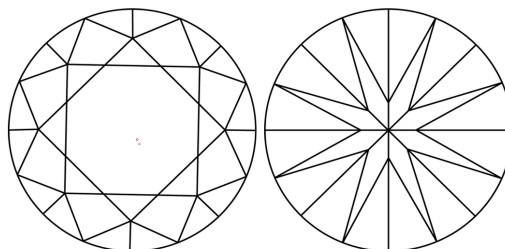
LABORATORY GROWN DIAMOND REPORT

LG627458161
Report verification at iqi.org

PROPORTIONS



CLARITY CHARACTERISTICS



KEY TO SYMBOLS

Red symbols indicate internal characteristics.
Green symbols indicate external characteristics.

LABORATORY GROWN
DIAMOND REPORT

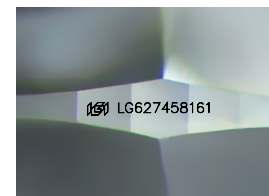
GRADING SCALES

CLARITY

| IF | VVS ¹⁻² | VS ¹⁻² | SI ¹⁻² | I ¹⁻³ |
|---------------------|-----------------------------|------------------------|-------------------|------------------|
| Internally Flawless | Very Very Slightly Included | Very Slightly Included | Slightly Included | Included |

COLOR

| | | | | | | | | | |
|------------|---|---|-------------|---|-------|---|---------------|------------|-------------|
| D | E | F | G | H | I | J | Faint | Very Light | Light |
| Light Tint | | | Fancy Light | | Fancy | | Fancy Intense | | Fancy Vivid |



Sample Image Used

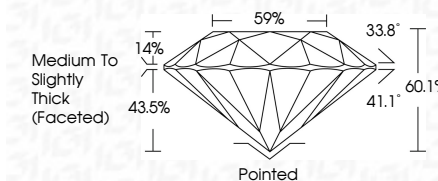


© IGI 2020, International Gemological Institute

FD - 10 20



| | |
|-------------------------|-----------------------------|
| March 30, 2024 | |
| IGI Report Number | LG627458161 |
| Description | LABORATORY GROWN DIAMOND |
| Shape and Cutting Style | ROUND BRILLIANT |
| Measurements | 8.21 - 8.27 X 4.95 MM |
| GRADING RESULTS | |
| Carat Weight | 2.02 CARATS |
| Color Grade | FANCY VIVID BLUE |
| Clarity Grade | VS 1 |
| Cut Grade | IDEAL |



ADDITIONAL GRADING INFORMATION

| | |
|--|---|
| Polish | EXCELLENT |
| Symmetry | EXCELLENT |
| Fluorescence | NONE |
| Inscription(s) |  LG627458161 |
| <p>Comments: This Laboratory Grown Diamond was created by Chemical Vapor Deposition (CVD) growth process.</p> <p>Indications of post-growth treatment.</p> | |

| | | | | | | |
|---------------------------|----------------------|------------------|---------------|-----------------------------------|-----------|--|
| March 30, 2024 | 2121 - 8.27 X .95 MM | 2102 CUBATS | VVS 1 | Medium to Slightly Thick (Fasted) | Polished | 1691 L6327458161 |
| GI Report No. L6327458161 | | FANCY VIVID BLUE | IDEAL | | EXCELLENT | |
| ROUND BRILLIANT | | | 60.1% | | EXCELLENT | |
| | | | 59% | | NONE | |
| | | | | | | |
| | Carat Weight | Color Grade | Clarity Grade | Car Grade | Culet | Comments: 1. Natural Color Diamond was treated by Chemical Vapor Deposition (CVD) growth process. 2. Indications of post-growth treatment. |
| | Color Grade | Clarity Grade | Car Grade | Polish | | |
| | Depth | Table | Girdle | Symmetry | | |
| | Fluorescence | Inscriptions(s) | | | | |
| | | | | | | |