



**INTERNATIONAL  
GEMOLOGICAL  
INSTITUTE**

**ELECTRONIC COPY**

**LABORATORY GROWN  
DIAMOND REPORT**

**LG627446875**

**IGI LABORATORY GROWN  
DIAMOND ID REPORT**

March 29, 2024

IGI Report Number **LG627446875**

**CUT CORNERED RECTANGULAR  
MODIFIED BRILLIANT  
6.57 X 4.43 X 2.68 MM**

Carat Weight 0.71 CARAT  
Color Grade FANCY INTENSE  
YELLOW  
Clarity Grade VS 2  
Polish EXCELLENT  
Symmetry VERY GOOD  
Fluorescence NONE  
Inscription(s) LG627446875

Comments: This Laboratory Grown Diamond was created by Chemical Vapor Deposition (CVD) growth process and may include post-growth treatment.

**LABORATORY GROWN DIAMOND REPORT**

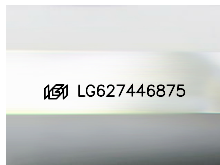
**IGI LABORATORY GROWN DIAMOND IDENTIFICATION REPORT**

March 29, 2024

IGI Report Number LG627446875

Description LABORATORY GROWN DIAMOND  
Shape and Cutting Style CUT CORNERED RECTANGULAR MODIFIED  
BRILLIANT

Measurements 6.57 X 4.43 X 2.68 MM



Sample Image Used

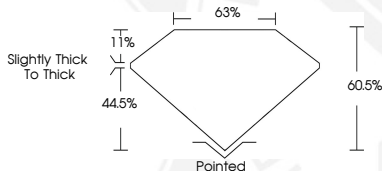
**GRADING RESULTS**

Carat Weight 0.71 CARAT  
Color Grade FANCY INTENSE YELLOW  
Clarity Grade VS 2

**ADDITIONAL GRADING INFORMATION**

Polish EXCELLENT  
Symmetry VERY GOOD  
Fluorescence NONE  
Inscription(s) LG627446875

Comments: This Laboratory Grown Diamond was created by Chemical Vapor Deposition (CVD) growth process and may include post-growth treatment.



**IGI LABORATORY GROWN  
DIAMOND ID REPORT**

March 29, 2024

IGI Report Number **LG627446875**

**CUT CORNERED RECTANGULAR  
MODIFIED BRILLIANT  
6.57 X 4.43 X 2.68 MM**

Carat Weight 0.71 CARAT  
Color Grade FANCY INTENSE  
YELLOW  
Clarity Grade VS 2  
Polish EXCELLENT  
Symmetry VERY GOOD  
Fluorescence NONE  
Inscription(s) LG627446875

Comments: This Laboratory Grown Diamond was created by Chemical Vapor Deposition (CVD) growth process and may include post-growth treatment.

THIS DOCUMENT WAS PRODUCED WITH THE FOLLOWING SECURITY MEASURES: SPECIAL DOCUMENT PAPER, INK SCREENS, WATERMARK, BACKGROUND DESIGN, HOLOGRAM AND OTHER SECURITY FEATURES NOT LISTED AND DO EXCEED DOCUMENT SECURITY INDUSTRY GUIDELINES.

For terms & conditions and to verify this report, please visit [www.igi.org](http://www.igi.org)