



ELECTRONIC COPY

LABORATORY GROWN DIAMOND REPORT

April 2, 2024	
IGI Report Number	LG626479565
Description	LABORATORY GROWN DIAMOND
Shape and Cutting Style	ROUND BRILLIANT
Measurements	7.89 - 7.95 X 4.89 MM

GRADING RESULTS

Carat Weight	1.87 CARAT
Color Grade	F
Clarity Grade	VS 1
Cut Grade	IDEAL

ADDITIONAL GRADING INFORMATION

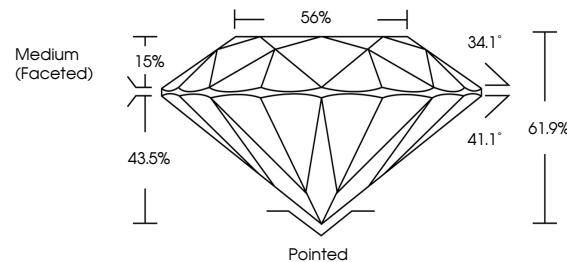
Polish	EXCELLENT
Symmetry	EXCELLENT
Fluorescence	NONE
Inscription(s)	131 LG626479565

Comments: This Laboratory Grown Diamond was created by Chemical Vapor Deposition (CVD) growth process and may include post-growth treatment. Type IIa

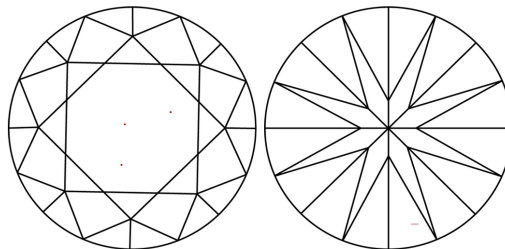
LABORATORY GROWN DIAMOND REPORT

LG626479565
Report verification at igi.org

PROPORTIONS



CLARITY CHARACTERISTICS



KEY TO SYMBOLS

Red symbols indicate internal characteristics.
Green symbols indicate external characteristics.

LABORATORY GROWN
DIAMOND REPORT

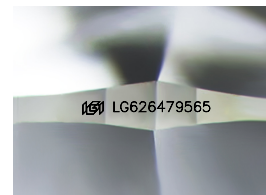
GRADING SCALES

CLARITY

IF	VVS ¹⁻²	VS ¹⁻²	SI ¹⁻²	I ¹⁻³
Internally Flawless	Very Very Slightly Included	Very Slightly Included	Slightly Included	Included

COLOR

D E F G H I J Faint Very Light Light



Sample Image Used



© IGI 2020, International Gemological Institute

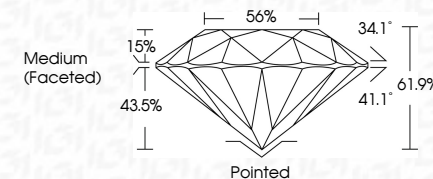
FD - 10 20

LABORATORY GROWN DIAMOND REPORT

April 2, 2024	
IGI Report Number	LG626479565
Description	LABORATORY GROWN DIAMOND
Shape and Cutting Style	ROUND BRILLIANT
Measurements	7.89 - 7.95 X 4.89 MM

GRADING RESULTS

Carat Weight	1.87 CARAT
Color Grade	F
Clarity Grade	VS 1
Cut Grade	IDEAL



ADDITIONAL GRADING INFORMATION

Polish	EXCELLENT
Symmetry	EXCELLENT
Fluorescence	NONE
Inscription(s)	(151) LG626479565

Comments: This Laboratory Grown Diamond was created by Chemical Vapor Deposition (CVD) growth process and may include post-growth treatment.
Type IIa



April 2, 2024	GI report No. LG26479565	1.87 CARAT	VS 1	Pointed
ROUND BRILLIANT			IDEAL	EXCELLENT
			61.5%	EXCELLENT
			56%	NONE
			Medium (faceted)	181 LG26479565
7.89 - 7.95 X 4.80 MM				
Color Weight				
Color Grade				
Clarity Grade				
Cut Grade				
Depth				
Table				
Girdle				
Culet				
Polish				
Symmetry				
Fluorescence				
Inscription(s)				

Comments:
 Created by GemV Diamond Vapour
 treated by Chemical Vapor Deposition
 (CVD) growth process and may include
 post-growth treatment.
 Type IIA