



**INTERNATIONAL  
GEMOLOGICAL  
INSTITUTE**

**ELECTRONIC COPY**

**LABORATORY GROWN  
DIAMOND REPORT**

**LG626424658**

**IGI LABORATORY GROWN  
DIAMOND ID REPORT**

March 23, 2024

IGI Report Number **LG626424658**

**CUT CORNERED RECTANGULAR  
MODIFIED BRILLIANT**  
**6.34 X 4.52 X 3.10 MM**

Carat Weight 0.77 CARAT  
Color Grade FANCY VIVID BLUE  
Clarity Grade VS 1  
Polish EXCELLENT  
Symmetry EXCELLENT  
Fluorescence NONE  
Inscription(s) LG626424658

Comments: This Laboratory Grown Diamond was created by Chemical Vapor Deposition (CVD) growth process. Indications of post-growth treatment.

**LABORATORY GROWN DIAMOND REPORT**

**IGI LABORATORY GROWN DIAMOND IDENTIFICATION REPORT**

March 23, 2024

IGI Report Number LG626424658

Description LABORATORY GROWN DIAMOND  
Shape and Cutting Style CUT CORNERED RECTANGULAR MODIFIED BRILLIANT

Measurements 6.34 X 4.52 X 3.10 MM

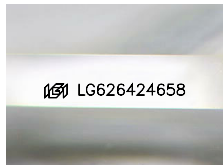
**GRADING RESULTS**

Carat Weight 0.77 CARAT  
Color Grade FANCY VIVID BLUE  
Clarity Grade VS 1

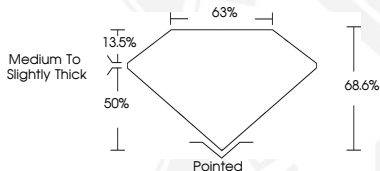
**ADDITIONAL GRADING INFORMATION**

Polish EXCELLENT  
Symmetry EXCELLENT  
Fluorescence NONE  
Inscription(s) LG626424658

Comments: This Laboratory Grown Diamond was created by Chemical Vapor Deposition (CVD) growth process. Indications of post-growth treatment.



Sample Image Used



**IGI LABORATORY GROWN  
DIAMOND ID REPORT**

March 23, 2024

IGI Report Number **LG626424658**

**CUT CORNERED RECTANGULAR  
MODIFIED BRILLIANT**  
**6.34 X 4.52 X 3.10 MM**

Carat Weight 0.77 CARAT  
Color Grade FANCY VIVID BLUE  
Clarity Grade VS 1  
Polish EXCELLENT  
Symmetry EXCELLENT  
Fluorescence NONE  
Inscription(s) LG626424658

Comments: This Laboratory Grown Diamond was created by Chemical Vapor Deposition (CVD) growth process. Indications of post-growth treatment.

THIS DOCUMENT WAS PRODUCED WITH THE FOLLOWING SECURITY MEASURES: SPECIAL DOCUMENT PAPER, INK SCREENS, WATERMARK, BACKGROUND DESIGN, HOLOGRAM AND OTHER SECURITY FEATURES NOT LISTED AND DO EXCEED DOCUMENT SECURITY INDUSTRY GUIDELINES.

For terms & conditions and to verify this report, please visit [www.igi.org](http://www.igi.org)