



**ELECTRONIC COPY**

## LABORATORY GROWN DIAMOND REPORT

March 6, 2024	
IGI Report Number	LG625461534
Description	LABORATORY GROWN DIAMOND
Shape and Cutting Style	OVAL BRILLIANT
Measurements	8.24 X 5.92 X 3.57 MM

## GRADING RESULTS

Carat Weight	1.08 CARAT
Color Grade	E
Clarity Grade	VS 2

### ADDITIONAL GRADING INFORMATION

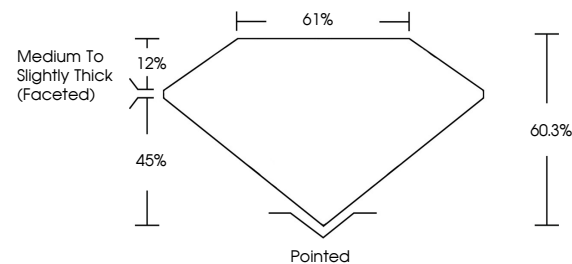
Polish	EXCELLENT
Symmetry	EXCELLENT
Fluorescence	NONE
Inscription(s)	 LG625461534

Comments: This Laboratory Grown Diamond was created by Chemical Vapor Deposition (CVD) growth process and may include post-growth treatment.  
Type IIa

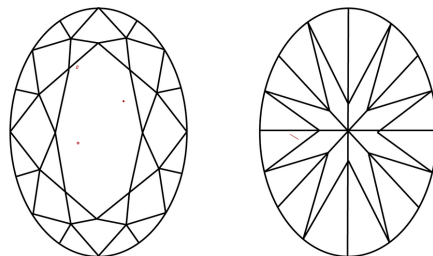
## LABORATORY GROWN DIAMOND REPORT

LG625461534  
Report verification at [igi.org](https://igi.org)

## PROPORTIONS



## CLARITY CHARACTERISTICS



## KEY TO SYMBOLS

Red symbols indicate internal characteristics.  
Green symbols indicate external characteristics.

LABORATORY GROWN  
DIAMOND REPORT

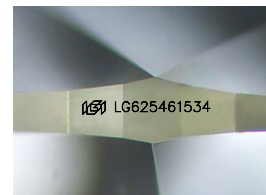
## GRADING SCALES

## CLARITY

IF	VVS <sup>1-2</sup>	VS <sup>1-2</sup>	SI <sup>1-2</sup>	I <sup>1-3</sup>
Internally Flawless	Very Very Slightly Included	Very Slightly Included	Slightly Included	Included

**COLOR**

D E F G H I J Faint Very Light Light



Sample Image Used



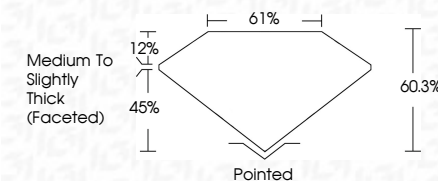
© IGI 2020, International Gemological Institute

FD - 10 20

**www.igi.org**

## LABORATORY GROWN DIAMOND REPORT

March 6, 2024	
IGI Report Number	LG625461534
Description	LABORATORY GROWN DIAMOND
Shape and Cutting Style	OVAL BRILLIANT
Measurements	8.24 X 5.92 X 3.57 MM
GRADING RESULTS	
Carat Weight	1.08 CARAT
Color Grade	E
Clarity Grade	VS 2



### ADDITIONAL GRADING INFORMATION

Polish	EXCELLENT
Symmetry	EXCELLENT
Fluorescence	NONE
Inscription(s)	(16) LG625461534

Comments: This Laboratory Grown Diamond was created by Chemical Vapor Deposition (CVD) growth process and may include post-growth treatment.  
Type IIa



March 6, 2024  
GI Report No LG625461534

1.08 CARAT	VS 2	61%	Medium To Slightly Thick (faceted)	Pointed	EXCELLENT	EXCELLENT	NONE
Carat Weight	Clarity Grade	Depth	Table	Grade	Culet	Polish	Symmetry
Color Grade							Fluorescence

**Comments:**  
This Laboratory Grown Diamond was created by Chemical Vapor Deposition (CVD) growth process and may include post-growth treatment.